

ANT1/ANT2/ANT3/ANT4 Rabbit pAb

Catalog No.: A15988 **1 Publications**

Basic Information

Observed MW

30kDa

Calculated MW

33kDa/32kDa/35kDa

Category

Primary antibody

Applications

ELISA, WB, IHC-P

Cross-Reactivity

Human, Mouse, Rat

Background

ANTs are the mitochondrial carrier subfamily of solute carrier proteins. ANT protein functions as a gated pore that translocates ADP from the cytoplasm into the mitochondrial matrix and ATP from the mitochondrial matrix into the cytoplasm. The protein forms a homodimer embedded in the inner mitochondria membrane.

Recommended Dilutions

WB 1:500 - 1:2000

IHC-P 1:50 - 1:200

Immunogen Information

Gene ID

291/292/293/83447

Swiss Prot

P12235/P05141/P12236/Q9H0C2

Immunogen

A synthetic peptide corresponding to a sequence within amino acids 200 to the C-terminus of human ANT1 (NP_001142.2).

Synonyms

ANT1/ANT2/ANT3/ANT4

Contact

 | www.abclonal.com

Product Information

Source

Rabbit

Isotype

IgG

Purification

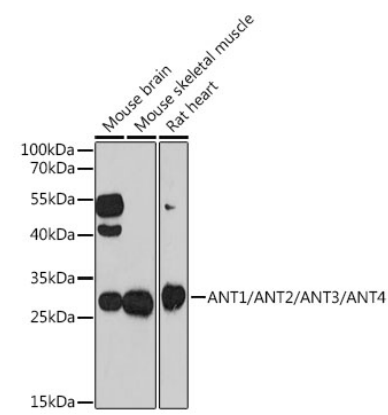
Affinity purification

Storage

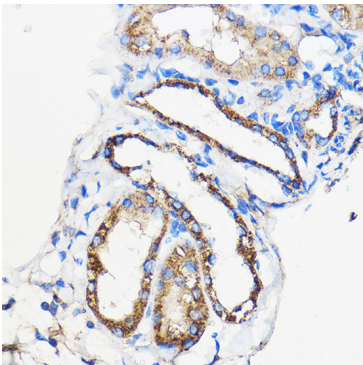
Store at -20°C. Avoid freeze / thaw cycles.

Buffer: PBS with 0.01% thimerosal, 50% glycerol, pH7.3.

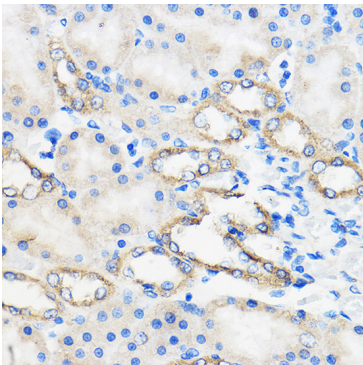
Validation Data



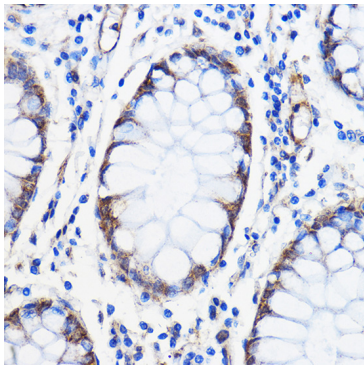
Western blot analysis of various lysates using ANT1/ANT2/ANT3/ANT4 Rabbit pAb (A15988) at 1:1000 dilution.
Secondary antibody: HRP Goat Anti-Rabbit IgG (H+L) (A5014) at 1:10000 dilution.
Lysates/proteins: 25µg per lane.
Blocking buffer: 3% nonfat dry milk in TBST.
Detection: ECL Enhanced Kit (RM00021).
Exposure time: 150s.



Immunohistochemistry analysis of ANT1/ANT2/ANT3/ANT4 in paraffin-embedded Mouse kidney using ANT1/ANT2/ANT3/ANT4 Rabbit pAb (A15988) at dilution of 1:50 (40x lens).Perform microwave antigen retrieval with 10 mM PBS buffer pH 7.2 before commencing with IHC staining protocol.



Immunohistochemistry analysis of ANT1/ANT2/ANT3/ANT4 in paraffin-embedded Rat kidney using ANT1/ANT2/ANT3/ANT4 Rabbit pAb (A15988) at dilution of 1:50 (40x lens).Perform microwave antigen retrieval with 10 mM PBS buffer pH 7.2 before commencing with IHC staining protocol.



Immunohistochemistry analysis of ANT1/ANT2/ANT3/ANT4 in paraffin-embedded Human colon carcinoma using ANT1/ANT2/ANT3/ANT4 Rabbit pAb (A15988) at dilution of 1:50 (40x lens).Perform microwave antigen retrieval with 10 mM PBS buffer pH 7.2 before commencing with IHC staining protocol.