

A15980

Leader in Biomolecular Solutions for Life Science



FREM2 Rabbit pAb

Catalog No.: A15980

Basic Information

Observed MW

351kDa

Calculated MW

351kDa

Category

Polyclonal Antibody

Applications

WB,IF/ICC,ELISA

Cross-Reactivity

Human,Mouse

Background

This gene encodes an integral membrane protein containing numerous CSPG (chondroitin sulfate proteoglycan element) repeats and Calx-beta domains. The encoded protein localizes to the basement membrane, forming a ternary complex that plays a role in epidermal-dermal interactions. This protein is important for the integrity of skin and renal epithelia. Mutations in this gene are associated with Fraser syndrome.

Recommended Dilutions

WB 1:500 - 1:2000

IF/ICC 1:50 - 1:200

Immunogen Information

Gene ID

341640

Swiss Prot

Q5SZK8

Immunogen

Recombinant fusion protein containing a sequence corresponding to amino acids 47-300 of human FREM2 (NP_997244.4).

Synonyms

CRYPTOP; FRASRS2; FREM2

Contact



www.abclonal.com

Product Information

Source

Rabbit

Isotype

IgG

Purification

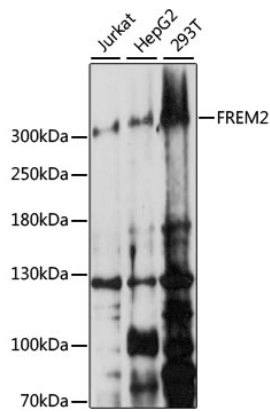
Affinity purification

Storage

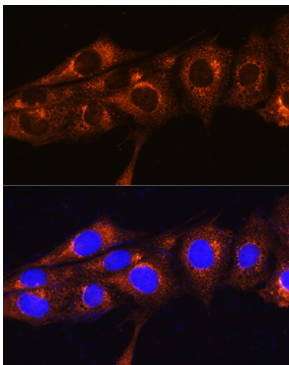
Store at -20°C. Avoid freeze / thaw cycles.

Buffer: PBS with 0.01% thimerosal,50% glycerol,pH7.3.

Validation Data



Western blot analysis of various lysates using FREM2 Rabbit pAb (A15980) at 1:1000 dilution.
Secondary antibody: HRP Goat Anti-Rabbit IgG (H+L) (AS014) at 1:10000 dilution.
Lysates/proteins: 25µg per lane.
Blocking buffer: 3% nonfat dry milk in TBST.
Detection: ECL Basic Kit (RM00020).
Exposure time: 150s.



Immunofluorescence analysis of NIH/3T3 cells using FREM2 Rabbit pAb (A15980) at dilution of 1:100. Secondary antibody: Cy3 Goat Anti-Rabbit IgG (H+L) (AS007) at 1:500 dilution. Blue: DAPI for nuclear staining.