

# RXFP4 Rabbit pAb

Catalog No.: A15978

## Basic Information

### Observed MW

40kDa

### Calculated MW

41kDa

### Category

Primary antibody

### Applications

ELISA, WB

### Cross-Reactivity

Human, Mouse

## Background

GPR100 is a member of the rhodopsin family of G protein-coupled receptors (GPRs) (Fredriksson et al., 2003 [PubMed 14623098]).

## Recommended Dilutions

**WB** 1:500 - 1:2000

## Immunogen Information

### Gene ID

339403

### Swiss Prot

Q8TDU9

### Immunogen

Recombinant fusion protein containing a sequence corresponding to amino acids 305-374 of human RXFP4 (NP\_871001.1).

### Synonyms

GPR100; RLN3R2; RXFPR4; GPCR142; RXFP4

## Contact

 | [www.abclonal.com](http://www.abclonal.com)

## Product Information

### Source

Rabbit

### Isotype

IgG

### Purification

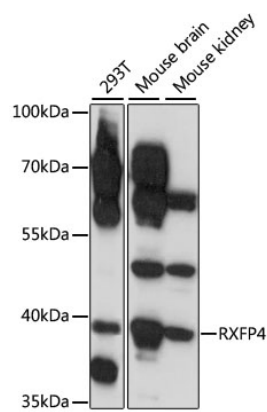
Affinity purification

### Storage

Store at -20°C. Avoid freeze / thaw cycles.

Buffer: PBS with 0.01% thimerosal, 50% glycerol, pH7.3.

# Validation Data



Western blot analysis of various lysates using RXFP4 Rabbit pAb (A15978) at 1:1000 dilution.  
Secondary antibody: HRP Goat Anti-Rabbit IgG (H+L) (A5014) at 1:10000 dilution.  
Lysates/proteins: 25µg per lane.  
Blocking buffer: 3% nonfat dry milk in TBST.  
Detection: ECL Enhanced Kit (RM00021).  
Exposure time: 1s.