

A15968

Leader in Biomolecular Solutions for Life Science



## MUC20 Rabbit pAb

Catalog No.: A15968

2 Publications

### Basic Information

#### Observed MW

80kDa

#### Calculated MW

72kDa

#### Category

Polyclonal Antibody

#### Applications

WB, ELISA

#### Cross-Reactivity

Human, Mouse, Rat

### Background

This gene encodes a member of the mucin protein family. Mucins are high molecular weight glycoproteins secreted by many epithelial tissues to form an insoluble mucous barrier. The C-terminus of this family member associates with the multifunctional docking site of the MET proto-oncogene and suppresses activation of some downstream MET signaling cascades. The protein features a mucin tandem repeat domain that varies between two and six copies in most individuals. Multiple variants encoding different isoforms have been found for this gene. A related pseudogene, which is also located on chromosome 3, has been identified.

### Recommended Dilutions

WB 1:500 - 1:2000

### Immunogen Information

#### Gene ID

200958

#### Swiss Prot

Q8N307

#### Immunogen

A synthetic peptide corresponding to a sequence within amino acids 100-200 of human MUC20 (NP\_689886.3).

#### Synonyms

MUC-20; MUC20

### Contact



[www.abclonal.com](http://www.abclonal.com)

### Product Information

#### Source

Rabbit

#### Isotype

IgG

#### Purification

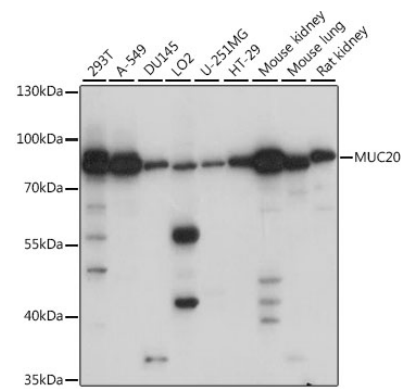
Affinity purification

#### Storage

Store at -20°C. Avoid freeze / thaw cycles.

Buffer: PBS with 0.01% thimerosal, 50% glycerol, pH 7.3.

# Validation Data



Western blot analysis of various lysates using MUC20 Rabbit pAb (A15968) at 1:1000 dilution. Secondary antibody: HRP Goat Anti-Rabbit IgG (H+L) (AS014) at 1:10000 dilution. Lysates/proteins: 25µg per lane. Blocking buffer: 3% nonfat dry milk in TBST. Detection: ECL Basic Kit (RM00020). Exposure time: 1s.