

# LSM12 Rabbit pAb

Catalog No.: A15947

## Basic Information

---

### Observed MW

22kDa

### Calculated MW

22kDa

### Category

Primary antibody

### Applications

ELISA, WB

### Cross-Reactivity

Human, Mouse

## Background

---

Nicotinic acid adenine dinucleotide phosphate (NAADP) binding protein (PubMed:34362892). Confers NAADP sensitivity to the two pore channel complex (TPCs) by acting as TPC accessory protein necessary for NAADP-evoked Ca(2+) release (PubMed:34362892). ( LSM12\_HUMAN,Q3MHD2 )

## Recommended Dilutions

---

WB 1:500 - 1:2000

## Immunogen Information

---

### Gene ID

124801

### Swiss Prot

Q3MHD2

### Immunogen

Recombinant fusion protein containing a sequence corresponding to amino acids 1-195 of human LSM12 (NP\_689557.1).

### Synonyms

PNAS-135; LSM12

## Contact

---

 | [www.abclonal.com](http://www.abclonal.com)

## Product Information

---

### Source

Rabbit

### Isotype

IgG

### Purification

Affinity purification

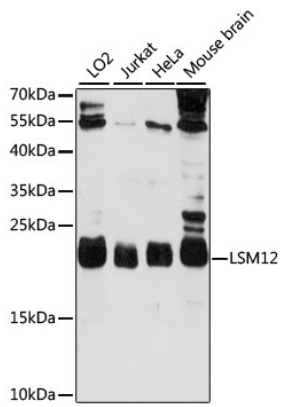
### Storage

Store at -20°C. Avoid freeze / thaw cycles.

Buffer: PBS with 0.01% thimerosal, 50% glycerol, pH7.3.

## Validation Data

---



Western blot analysis of various lysates using LSM12 Rabbit pAb (A15947) at 1000 dilution.  
Secondary antibody: HRP Goat Anti-Rabbit IgG (H+L) (AS014) at 1:10000 dilution.  
Lysates/proteins: 25µg per lane.  
Blocking buffer: 3% nonfat dry milk in TBST.  
Detection: ECL Basic Kit (RM00020).  
Exposure time: 60s.