

A15941

Leader in Biomolecular Solutions for Life Science



CHCHD1 Rabbit pAb

Catalog No.: A15941

Basic Information

Observed MW

13kDa

Calculated MW

13kDa

Category

Mouse Monoclonal Antibody

Applications

WB,ELISA

Cross-Reactivity

Human,Mouse

Background

Enables RNA binding activity. Predicted to be involved in mitochondrial translation. Located in cytosol; mitochondrion; and nuclear lumen.

Recommended Dilutions

WB 1:500 - 1:2000

Immunogen Information

Gene ID

118487

Swiss Prot

Q96BP2

Immunogen

Recombinant fusion protein containing a sequence corresponding to amino acids 1-118 of human CHCHD1 (NP_976043.1).

Synonyms

C2360; MRP-S37; C10orf34; CHCHD1

Contact



www.abclonal.com

Product Information

Source

Rabbit

Isotype

IgG

Purification

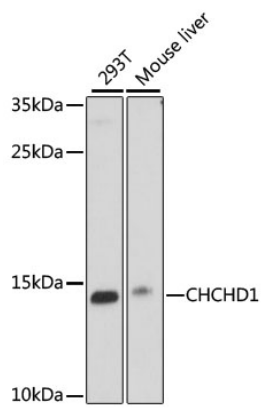
Affinity purification

Storage

Store at -20°C. Avoid freeze / thaw cycles.

Buffer: PBS with 0.01% thimerosal,50% glycerol,pH7.3.

Validation Data



Western blot analysis of various lysates using CHCHD1 Rabbit pAb (A15941) at 1000 dilution.
Secondary antibody: HRP Goat Anti-Rabbit IgG (H+L) (AS014) at 1:10000 dilution.
Lysates/proteins: 25µg per lane.
Blocking buffer: 3% nonfat dry milk in TBST.
Detection: ECL Basic Kit (RM00020).
Exposure time: 90s.