

A15935

Leader in Biomolecular Solutions for Life Science



SLC52A3 Rabbit pAb

Catalog No.: A15935

1 Publications

Basic Information

Observed MW

51kDa

Calculated MW

51kDa

Category

Mouse Monoclonal Antibody

Applications

WB, ELISA

Cross-Reactivity

Mouse

Background

This gene encodes a riboflavin transporter protein that is strongly expressed in the intestine and likely plays a role in intestinal absorption of riboflavin. The protein is predicted to have eleven transmembrane domains and a cell surface localization signal in the C-terminus. Mutations at this locus have been associated with Brown-Vialetto-Van Laere syndrome and Fazio-Londe disease.

Recommended Dilutions

WB 1:500 - 1:2000

Immunogen Information

Gene ID
113278

Swiss Prot
Q9NQ40

Immunogen

A synthetic peptide corresponding to a sequence within amino acids 200-300 of human SLC52A3 (NP_212134.3).

Synonyms

RFT2; BVVLS; RFVT3; hRFT2; BVVLS1; C20orf54; bA371L19.1; SLC52A3

Contact



www.abclonal.com

Product Information

Source
Rabbit

Isotype
IgG

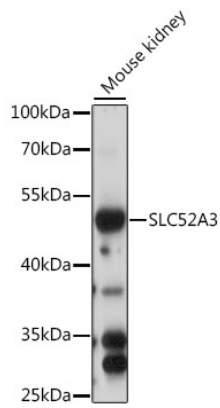
Purification
Affinity purification

Storage

Store at -20°C. Avoid freeze / thaw cycles.

Buffer: PBS with 0.01% thimerosal, 50% glycerol, pH 7.3.

Validation Data



Western blot analysis of lysates from mouse kidney, using SLC52A3 Rabbit pAb (A15935) at 1:1000 dilution.

Secondary antibody: HRP Goat Anti-Rabbit IgG (H+L) (AS014) at 1:10000 dilution.

Lysates/proteins: 25µg per lane.

Blocking buffer: 3% nonfat dry milk in TBST.

Detection: ECL Basic Kit (RM00020).

Exposure time: 60s.