

# NUDCD1 Rabbit pAb

Catalog No.: A15919

## Basic Information

---

### Observed MW

73kDa

### Calculated MW

67kDa

### Category

Primary antibody

### Applications

ELISA, WB

### Cross-Reactivity

Human, Mouse

## Background

---

Predicted to be involved in immune system process. Located in cytosol and nucleoplasm.

## Recommended Dilutions

---

**WB** 1:500 - 1:2000

## Immunogen Information

---

### Gene ID

84955

### Swiss Prot

Q96RS6

### Immunogen

Recombinant fusion protein containing a sequence corresponding to amino acids 304-583 of human NUDCD1 (NP\_116258.2).

### Synonyms

CML66; OVA66; NUDCD1

## Contact

---

 | [www.abclonal.com](http://www.abclonal.com)

## Product Information

---

### Source

Rabbit

### Isotype

IgG

### Purification

Affinity purification

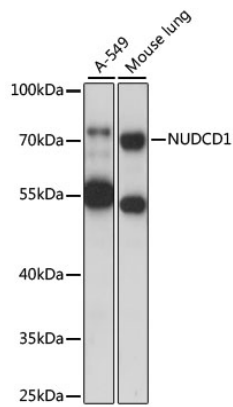
### Storage

Store at -20°C. Avoid freeze / thaw cycles.

Buffer: PBS with 0.01% thimerosal, 50% glycerol, pH7.3.

## Validation Data

---



Western blot analysis of various lysates using NUDCD1 Rabbit pAb (A15919) at 1000 dilution.  
Secondary antibody: HRP Goat Anti-Rabbit IgG (H+L) (AS014) at 1:10000 dilution.  
Lysates/proteins: 25µg per lane.  
Blocking buffer: 3% nonfat dry milk in TBST.  
Detection: ECL Basic Kit (RM00020).  
Exposure time: 5s.