

A15905

Leader in Biomolecular Solutions for Life Science



## SF3B5 Rabbit pAb

Catalog No.: A15905

### Basic Information

---

**Observed MW**

11kDa

**Calculated MW**

10kDa

**Category**

Polyclonal Antibody

**Applications**

WB,ELISA

**Cross-Reactivity**

Human,Mouse,Rat

### Background

---

Enables RNA binding activity and splicing factor binding activity. Involved in mRNA splicing, via spliceosome. Located in nucleoplasm. Part of U12-type spliceosomal complex and U2-type precatalytic spliceosome.

### Recommended Dilutions

---

WB 1:500 - 1:2000

### Immunogen Information

---

**Gene ID**

83443

**Swiss Prot**

Q9BWJ5

**Immunogen**

Recombinant fusion protein containing a sequence corresponding to amino acids 1-86 of human SF3B5 (NP\_112577.1).

**Synonyms**

Ysf3; SF3b10; SF3B5

### Contact

---



[www.abclonal.com](http://www.abclonal.com)

### Product Information

---

**Source**

Rabbit

**Isotype**

IgG

**Purification**

Affinity purification

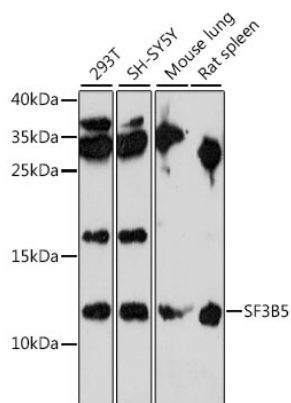
**Storage**

Store at -20°C. Avoid freeze / thaw cycles.

Buffer: PBS with 0.01% thimerosal,50% glycerol,pH7.3.

## Validation Data

---



Western blot analysis of various lysates using SF3B5 Rabbit pAb (A15905) at 1:1000 dilution.  
Secondary antibody: HRP Goat Anti-Rabbit IgG (H+L) (AS014) at 1:10000 dilution.  
Lysates/proteins: 25 $\mu$ g per lane.  
Blocking buffer: 3% nonfat dry milk in TBST.  
Detection: ECL Enhanced Kit (RM00021).  
Exposure time: 90s.