

# CERK Rabbit pAb

Catalog No.: A15889

## Basic Information

### Observed MW

60kDa

### Calculated MW

60kDa

### Category

Primary antibody

### Applications

ELISA, WB

### Cross-Reactivity

Human, Mouse, Rat

## Background

CERK converts ceramide to ceramide 1-phosphate (C1P), a sphingolipid metabolite. Both CERK and C1P have been implicated in various cellular processes, including proliferation, apoptosis, phagocytosis, and inflammation (Kim et al., 2006 [PubMed 16488390]).

## Recommended Dilutions

WB 1:500 - 1:2000

## Immunogen Information

### Gene ID

64781

### Swiss Prot

Q8TCT0

### Immunogen

A synthetic peptide corresponding to a sequence within amino acids 400 to the C-terminus of human CERK (NP\_073603.2).

### Synonyms

LK4; hCERK; dA59H18.2; dA59H18.3; CERK

## Contact

 | [www.abclonal.com](http://www.abclonal.com)

## Product Information

### Source

Rabbit

### Isotype

IgG

### Purification

Affinity purification

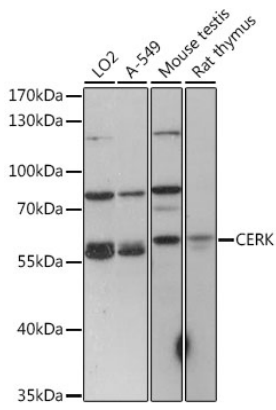
### Storage

Store at -20°C. Avoid freeze / thaw cycles.

Buffer: PBS with 0.01% thimerosal, 50% glycerol, pH 7.3.

## Validation Data

---



Western blot analysis of various lysates using CERK Rabbit pAb (A15889) at 1:1000 dilution.  
Secondary antibody: HRP Goat Anti-Rabbit IgG (H+L) (AS014) at 1:10000 dilution.  
Lysates/proteins: 25 $\mu$ g per lane.  
Blocking buffer: 3% nonfat dry milk in TBST.  
Detection: ECL Basic Kit (RM00020).  
Exposure time: 60s.