

# ATL2 Rabbit pAb

Catalog No.: A15884

## Basic Information

---

### Observed MW

66kDa

### Calculated MW

66kDa

### Category

Primary antibody

### Applications

ELISA, WB, IF/ICC

### Cross-Reactivity

Human, Mouse, Rat

## Background

---

Enables identical protein binding activity. Involved in Golgi organization; endoplasmic reticulum tubular network membrane organization; and protein homooligomerization. Located in endoplasmic reticulum tubular network membrane. Is integral component of membrane.

## Recommended Dilutions

---

<b>WB</b>	1:500 - 1:1000
<b>IF/ICC</b>	1:50 - 1:200

## Immunogen Information

---

<b>Gene ID</b>	<b>Swiss Prot</b>
64225	Q8NHH9

### Immunogen

Recombinant fusion protein containing a sequence corresponding to amino acids 390-470 of human ATL2 (NP\_001129145.1).

### Synonyms

aip-2; ARL3IP2; ARL6IP2; atlastin2; ATL2

## Contact

---

 | [www.abclonal.com](http://www.abclonal.com)

## Product Information

---

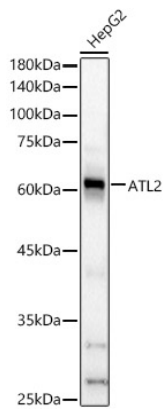
<b>Source</b>	<b>Isotype</b>	<b>Purification</b>
Rabbit	IgG	Affinity purification

### Storage

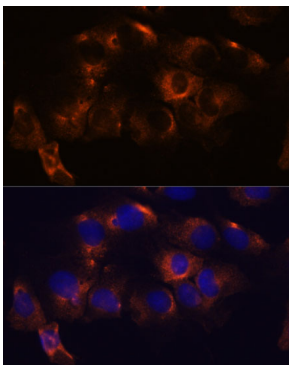
Store at -20°C. Avoid freeze / thaw cycles.  
Buffer: PBS with 0.01% thimerosal, 50% glycerol, pH7.3.

## Validation Data

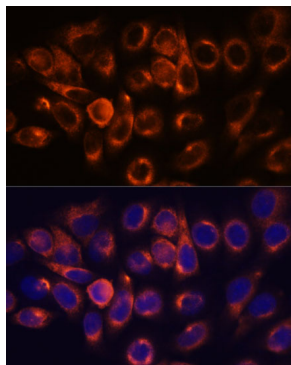
---



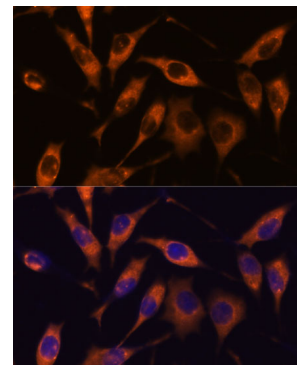
Western blot analysis of HepG2, using ATL2 antibody (A15884) at 1:800 dilution.  
Secondary antibody: HRP Goat Anti-Rabbit IgG (H+L) (AS014) at 1:10000 dilution.  
Lysates/proteins: 25µg per lane.  
Blocking buffer: 3% nonfat dry milk in TBST.  
Detection: ECL Basic Kit (RM00020).  
Exposure time: 20s.



Immunofluorescence analysis of C6 cells using ATL2 antibody (A15884) at dilution of 1:100. Blue: DAPI for nuclear staining.



Immunofluorescence analysis of HeLa cells using ATL2 antibody (A15884) at dilution of 1:100. Blue: DAPI for nuclear staining.



Immunofluorescence analysis of L929 cells using ATL2 antibody (A15884) at dilution of 1:100. Blue: DAPI for nuclear staining.