

NIF3L1 Rabbit pAb

Catalog No.: A15879

Basic Information

Observed MW

42kDa

Calculated MW

42kDa

Category

Primary antibody

Applications

ELISA, WB

Cross-Reactivity

Human, Mouse

Background

Enables identical protein binding activity. Involved in positive regulation of transcription, DNA-templated. Located in cytoplasm.

Recommended Dilutions

WB 1:500 - 1:2000

Immunogen Information

Gene ID

60491

Swiss Prot

Q9GZT8

Immunogen

Recombinant fusion protein containing a sequence corresponding to amino acids 1-377 of human NIF3L1 (NP_001129511.1).

Synonyms

CALS-7; MDS015; ALS2CR1; NIF3L1

Contact

 | www.abclonal.com

Product Information

Source

Rabbit

Isotype

IgG

Purification

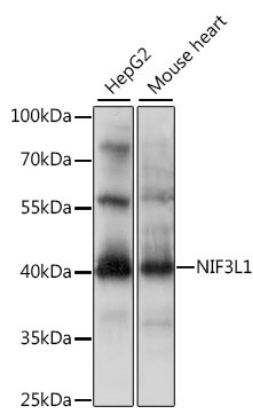
Affinity purification

Storage

Store at -20°C. Avoid freeze / thaw cycles.

Buffer: PBS with 0.02% sodium azide, 50% glycerol, pH7.3.

Validation Data



Western blot analysis of extracts of various cell lines, using NIF3L1 antibody (A15879) at 1:1000 dilution.

Secondary antibody: HRP Goat Anti-Rabbit IgG (H+L) (A5014) at 1:10000 dilution.

Lysates/proteins: 25µg per lane.

Blocking buffer: 3% nonfat dry milk in TBST.

Detection: ECL Basic Kit (RM00020).

Exposure time: 10s.