

# STAMBPL1 Rabbit pAb

Catalog No.: A15877 **1 Publications**

## Basic Information

### Observed MW

50kDa

### Calculated MW

50kDa

### Category

Primary antibody

### Applications

ELISA, WB

### Cross-Reactivity

Mouse, Rat

## Background

Predicted to enable Lys63-specific deubiquitinase activity and thiol-dependent deubiquitinase. Predicted to be involved in protein K63-linked deubiquitination. Located in membrane.

## Recommended Dilutions

**WB** 1:500 - 1:2000

## Immunogen Information

### Gene ID

57559

### Swiss Prot

Q96FJ0

### Immunogen

Recombinant fusion protein containing a sequence corresponding to amino acids 120-250 of human STAMBPL1 (NP\_065850.1).

### Synonyms

AMSH-FP; AMSH-LP; ALMalpha; bA399O19.2; STAMBPL1

## Contact

 | [www.abclonal.com](http://www.abclonal.com)

## Product Information

### Source

Rabbit

### Isotype

IgG

### Purification

Affinity purification

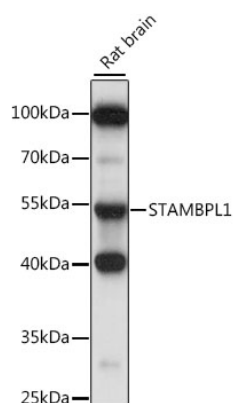
### Storage

Store at -20°C. Avoid freeze / thaw cycles.

Buffer: PBS with 0.01% thimerosal, 50% glycerol, pH7.3.

## Validation Data

---



Western blot analysis of lysates from rat brain, using STAMBPL1 Rabbit pAb (A15877) at 1:1000 dilution.

Secondary antibody: HRP Goat Anti-Rabbit IgG (H+L) (A5014) at 1:10000 dilution.

Lysates/proteins: 25µg per lane.

Blocking buffer: 3% nonfat dry milk in TBST.

Detection: ECL Basic Kit (RM00020).

Exposure time: 30s.