

A15869

Leader in Biomolecular Solutions for Life Science



UBQLN4 Rabbit pAb

Catalog No.: A15869

Basic Information

Observed MW

75kDa

Calculated MW

64kDa

Category

Mouse Monoclonal Antibody

Applications

WB, IHC-P, IF/ICC, ELISA

Cross-Reactivity

Human, Mouse, Rat

Background

Enables K48-linked polyubiquitin modification-dependent protein binding activity and identical protein binding activity. Involved in cellular response to DNA damage stimulus; negative regulation of double-strand break repair via homologous recombination; and regulation of cellular catabolic process. Located in several cellular components, including autophagosome; nucleoplasm; and site of DNA damage. Part of protein-containing complex. Colocalizes with cytosolic proteasome complex and nuclear proteasome complex.

Recommended Dilutions

WB	1:500 - 1:1000
IHC-P	1:50 - 1:200
IF/ICC	1:50 - 1:200

Immunogen Information

Gene ID

56893

Swiss Prot

Q9NRR5

Immunogen

Recombinant fusion protein containing a sequence corresponding to amino acids 366-432 of human UBQLN4 (NP_064516.2).

Synonyms

A1U; A1Up; UBIN; CIP75; C1orf6; UBQLN4

Contact



www.abclonal.com

Product Information

Source

Rabbit

Isotype

IgG

Purification

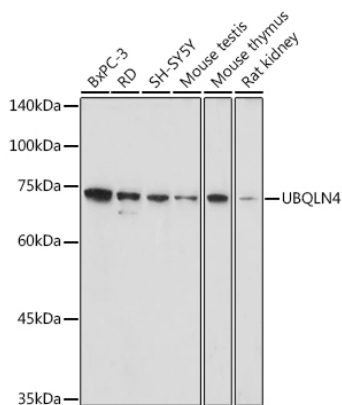
Affinity purification

Storage

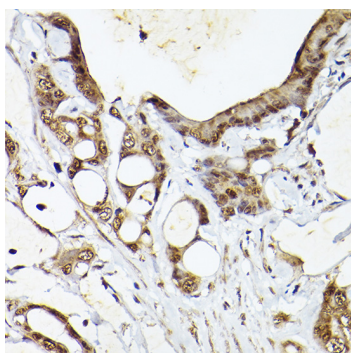
Store at -20°C. Avoid freeze / thaw cycles.

Buffer: PBS with 0.05% proclin300, 50% glycerol, pH7.3.

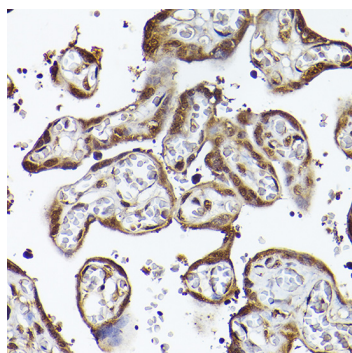
Validation Data



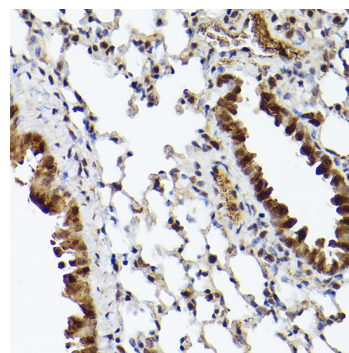
Western blot analysis of extracts of various cell lines, using UBQLN4 antibody (A15869) at 1:1000 dilution. Secondary antibody: HRP Goat Anti-Rabbit IgG (H+L) (AS014) at 1:10000 dilution. Lysates/proteins: 25µg per lane. Blocking buffer: 3% nonfat dry milk in TBST. Detection: ECL Basic Kit (RM00020). Exposure time: 60s.



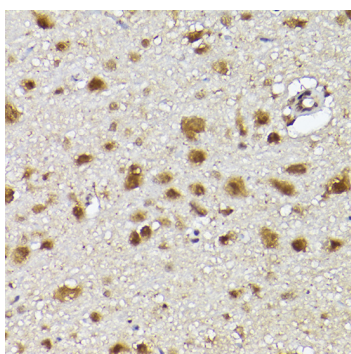
Immunohistochemistry analysis of paraffin-embedded human colon carcinoma using UBQLN4 Rabbit pAb (A15869) at dilution of 1:100 (40x lens). Perform high pressure antigen retrieval with 10 mM citrate buffer pH 6.0 before commencing with IHC staining protocol.



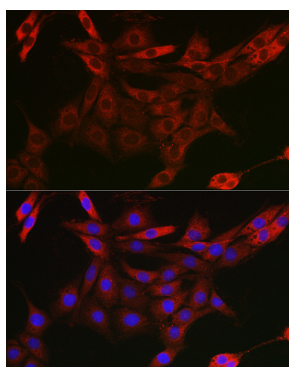
Immunohistochemistry analysis of paraffin-embedded human placenta using UBQLN4 Rabbit pAb (A15869) at dilution of 1:100 (40x lens). Perform high pressure antigen retrieval with 10 mM citrate buffer pH 6.0 before commencing with IHC staining protocol.



Immunohistochemistry analysis of paraffin-embedded mouse lung using UBQLN4 Rabbit pAb (A15869) at dilution of 1:100 (40x lens). Perform high pressure antigen retrieval with 10 mM citrate buffer pH 6.0 before commencing with IHC staining protocol.



Immunohistochemistry analysis of paraffin-embedded rat brain using UBQLN4 Rabbit pAb (A15869) at dilution of 1:100 (40x lens). Perform high pressure antigen retrieval with 10 mM citrate buffer pH 6.0 before commencing with IHC staining protocol.



Immunofluorescence analysis of PC-12 cells using UBQLN4 Rabbit pAb (A15869) at dilution of 1:50 (40x lens). Blue: DAPI for nuclear staining.