

A15573

Leader in Biomolecular Solutions for Life Science



# ADGRA3 Rabbit pAb

Catalog No.: A15573

## Basic Information

---

### Observed MW

146kDa

### Calculated MW

146kDa

### Category

Polyclonal Antibody

### Applications

WB,ELISA

### Cross-Reactivity

Mouse,Rat

## Background

---

This gene encodes a member of the G protein-coupled receptor superfamily. This membrane protein may play a role in tumor angiogenesis through its interaction with the human homolog of the Drosophila disc large tumor suppressor gene. This gene is mapped to a candidate region of chromosome 4 which may be associated with bipolar disorder and schizophrenia.

## Recommended Dilutions

---

WB 1:200 - 1:2000

## Immunogen Information

---

### Gene ID

166647

### Swiss Prot

Q8IWK6

### Immunogen

Recombinant fusion protein containing a sequence corresponding to amino acids 370-600 of human ADGRA3 (NP\_660333.2).

### Synonyms

PGR21; TEM5L; GPR125; ADGRA3

## Contact

---



[www.abclonal.com](http://www.abclonal.com)

## Product Information

---

### Source

Rabbit

### Isotype

IgG

### Purification

Affinity purification

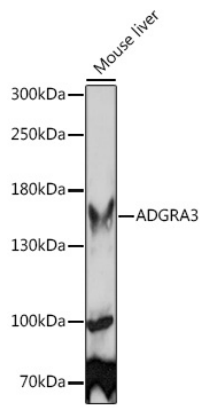
### Storage

Store at -20°C. Avoid freeze / thaw cycles.

Buffer: PBS with 0.01% thimerosal,50% glycerol,pH7.3.

## Validation Data

---



Western blot analysis of lysates from Mouse liver, using ADGRA3 Rabbit pAb (A15573) at 1:1000 dilution.  
Secondary antibody: HRP Goat Anti-Rabbit IgG (H+L) (AS014) at 1:10000 dilution.  
Lysates/proteins: 25 $\mu$ g per lane.  
Blocking buffer: 3% nonfat dry milk in TBST.  
Detection: ECL Basic Kit (RM00020).  
Exposure time: 3min.