

A15553

Leader in Biomolecular Solutions for Life Science



# ADPRHL1 Rabbit pAb

Catalog No.: A15553

## Basic Information

### Observed MW

42kDa

### Calculated MW

40kDa

### Category

Polyclonal Antibody

### Applications

WB,ELISA

### Cross-Reactivity

Mouse,Rat

## Background

ADP-ribosylation is a reversible posttranslational modification used to regulate protein function. ADP-ribosyltransferases (see ART1; MIM 601625) transfer ADP-ribose from NAD<sup>+</sup> to the target protein, and ADP-ribosylhydrolases, such as ADPRHL1, reverse the reaction (Glowacki et al., 2002 [PubMed 12070318]).

## Recommended Dilutions

WB 1:200 - 1:2000

## Immunogen Information

### Gene ID

113622

### Swiss Prot

Q8NDY3

### Immunogen

Recombinant fusion protein containing a sequence corresponding to amino acids 80-280 of human ADPRHL1 (NP\_612439.2).

### Synonyms

ARH2; ADPRHL1

## Contact



[www.abclonal.com](http://www.abclonal.com)

## Product Information

### Source

Rabbit

### Isotype

IgG

### Purification

Affinity purification

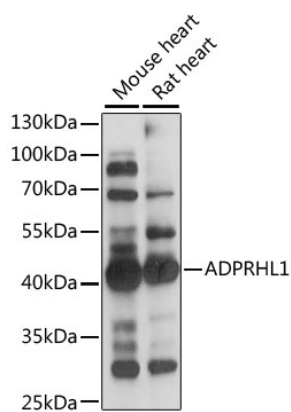
### Storage

Store at -20°C. Avoid freeze / thaw cycles.

Buffer: PBS with 0.01% thimerosal,50% glycerol,pH7.3.

## Validation Data

---



Western blot analysis of various lysates using ADPRHL1 Rabbit pAb (A15553) at 1:1000 dilution.  
Secondary antibody: HRP Goat Anti-Rabbit IgG (H+L) (AS014) at 1:10000 dilution.  
Lysates/proteins: 25 $\mu$ g per lane.  
Blocking buffer: 3% nonfat dry milk in TBST.  
Detection: ECL Enhanced Kit (RM00021).  
Exposure time: 3s.