

A15435

Leader in Biomolecular Solutions for Life Science



ADAMDEC1 Rabbit pAb

Catalog No.: A15435

Basic Information

Observed MW

42-50kDa

Calculated MW

53kDa

Category

Polyclonal Antibody

Applications

WB,ELISA

Cross-Reactivity

Human

Background

This encoded protein is thought to be a secreted protein belonging to the disintegrin metalloproteinase family. Its expression is upregulated during dendritic cells maturation. This protein may play an important role in dendritic cell function and their interactions with germinal center T cells.

Recommended Dilutions

WB 1:200 - 1:2000

Immunogen Information

Gene ID

27299

Swiss Prot

O15204

Immunogen

Recombinant fusion protein containing a sequence corresponding to amino acids 206-470 of human ADAMDEC1 (NP_055294.1).

Synonyms

M12.219; ADAMDEC1

Contact



www.abclonal.com

Product Information

Source

Rabbit

Isotype

IgG

Purification

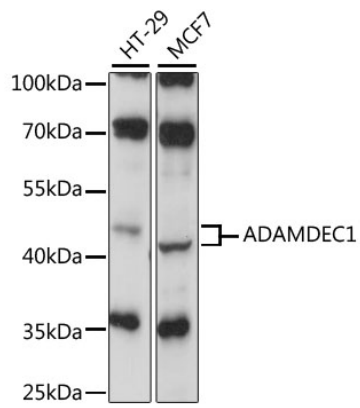
Affinity purification

Storage

Store at -20°C. Avoid freeze / thaw cycles.

Buffer: PBS with 0.01% thimerosal, 50% glycerol, pH7.3.

Validation Data



Western blot analysis of various lysates using ADAMDEC1 Rabbit pAb (A15435) at 1:1000 dilution.
Secondary antibody: HRP Goat Anti-Rabbit IgG (H+L) (AS014) at 1:10000 dilution.
Lysates/proteins: 25µg per lane.
Blocking buffer: 3% nonfat dry milk in TBST.
Detection: ECL Basic Kit (RM00020).
Exposure time: 30s.