

A15393

Leader in Biomolecular Solutions for Life Science



AFG3L2 Rabbit pAb

Catalog No.: A15393

Basic Information

Observed MW

80-90kDa

Calculated MW

89kDa

Category

Polyclonal Antibody

Applications

WB,IHC-P,IP,ELISA

Cross-Reactivity

Human,Mouse,Rat

Background

This gene encodes a protein localized in mitochondria and closely related to paraplegin. The paraplegin gene is responsible for an autosomal recessive form of hereditary spastic paraplegia. This gene is a candidate gene for other hereditary spastic paraplegias or neurodegenerative disorders.

Recommended Dilutions

WB 1:100 - 1:500

IHC-P 1:50 - 1:200

IP 0.5µg-4µg antibody for
200µg-400µg extracts
of whole cells

Immunogen Information

Gene ID

10939

Swiss Prot

Q9Y4W6

Immunogen

Recombinant fusion protein containing a sequence corresponding to amino acids 538-797 of human AFG3L2 (NP_006787.2).

Synonyms

OPA12; SCA28; SPAX5; AFG3L2

Contact



www.abclonal.com

Product Information

Source

Rabbit

Isotype

IgG

Purification

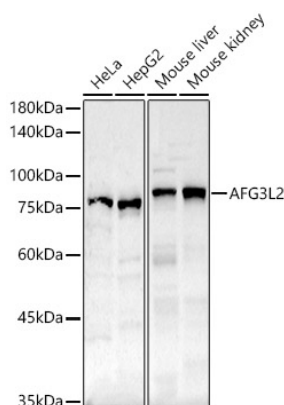
Affinity purification

Storage

Store at -20°C. Avoid freeze / thaw cycles.

Buffer: PBS with 0.01% thimerosal, 50% glycerol, pH7.3.

Validation Data



Western blot analysis of various lysates, using AFG3L2 Rabbit pAb (A15393) at 1:500 dilution.

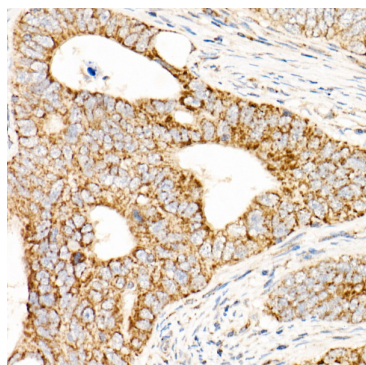
Secondary antibody: HRP Goat Anti-Rabbit IgG (H+L) (AS014) at 1:10000 dilution.

Lysates/proteins: 25µg per lane.

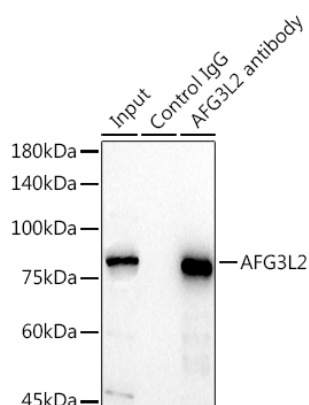
Blocking buffer: 3% nonfat dry milk in TBST.

Detection: ECL Basic Kit (RM00020).

Exposure time: 30s.



Immunohistochemistry analysis of paraffin-embedded human colon carcinoma using AFG3L2 Rabbit pAb (A15393) at dilution of 1:50 (40x lens). Perform high pressure antigen retrieval with 10 mM citrate buffer pH 6.0 before commencing with IHC staining protocol.



Immunoprecipitation analysis of 300 µg extracts of HeLa cells using 3 µg AFG3L2 antibody (A15393). Western blot was performed from the immunoprecipitate using AFG3L2 antibody (A15393) at a dilution of 1:1000.