

G6PD Rabbit pAb

Catalog No.: A1537 **2 Publications**

Basic Information

Catalog No.

A1537

Observed MW

60kDa

Calculated MW

59kDa/62kDa/63kDa

Category

Primary antibody

Applications

WB, IF, IP

Cross-Reactivity

Human, Mouse, Rat

Recommended Dilutions

WB	1:500 - 1:2000
IF	1:50 - 1:200
IP	1:50 - 1:200

Contact

 | www.abclonal.com

Background

This gene encodes glucose-6-phosphate dehydrogenase. This protein is a cytosolic enzyme encoded by a housekeeping X-linked gene whose main function is to produce NADPH, a key electron donor in the defense against oxidizing agents and in reductive biosynthetic reactions. G6PD is remarkable for its genetic diversity. Many variants of G6PD, mostly produced from missense mutations, have been described with wide ranging levels of enzyme activity and associated clinical symptoms. G6PD deficiency may cause neonatal jaundice, acute hemolysis, or severe chronic non-spherocytic hemolytic anemia. Two transcript variants encoding different isoforms have been found for this gene.

Immunogen Information

Gene ID	Swiss Prot
2539	P11413

Immunogen

Recombinant fusion protein containing a sequence corresponding to amino acids 246-545 of human G6PD (NP_000393.4).

Synonyms

G6PD;G6PD1

Product Information

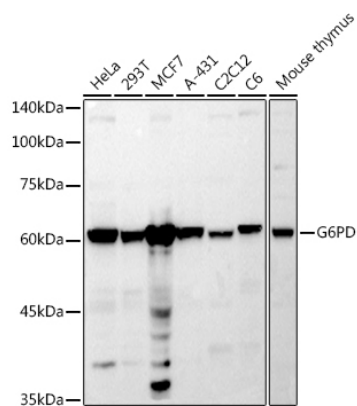
Source	Isotype	Purification
Rabbit	IgG	Affinity purification

Storage

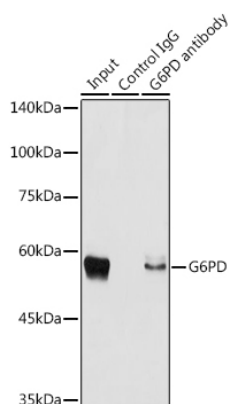
Store at -20°C. Avoid freeze / thaw cycles.

Buffer: PBS with 0.02% sodium azide,50% glycerol,pH7.3.

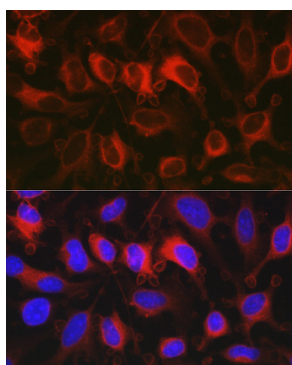
Validation Data



Western blot analysis of extracts of various cell lines, using G6PD antibody (A1537) at 1:1000 dilution. Secondary antibody: HRP Goat Anti-Rabbit IgG (H+L) (AS014) at 1:10000 dilution. Lysates/proteins: 25ug per lane. Blocking buffer: 3% nonfat dry milk in TBST. Detection: ECL Basic Kit (RM00020). Exposure time: 30s.



Immunoprecipitation analysis of 300ug extracts of MCF7 cells using 3ug G6PD antibody (A1537). Western blot was performed from the immunoprecipitate using G6PD antibody (A1537) at a dilution of 1:2000.



Immunofluorescence analysis of HeLa cells using G6PD Rabbit pAb (A1537) at dilution of 1:100 (40x lens). Blue: DAPI for nuclear staining.