

Placental alkaline phosphatase (PLAP) Rabbit pAb

Catalog No.: A1529

Basic Information

Observed MW

58kDa

Calculated MW

58kDa

Category

Primary antibody

Applications

WB

Cross-Reactivity

Human

Background

The protein encoded by this gene is an alkaline phosphatase, a metalloenzyme that catalyzes the hydrolysis of phosphoric acid monoesters. It belongs to a multigene family composed of four alkaline phosphatase isoenzymes. The enzyme functions as a homodimer and has a catalytic site containing one magnesium and two zinc ions, which are required for its enzymatic function. One of the main sources of this enzyme is the liver, and thus, it's one of several indicators of liver injury in different clinical conditions. In pregnant women, this protein is primarily expressed in placental and endometrial tissue, however, strong ectopic expression has been detected in ovarian adenocarcinoma, serous cystadenocarcinoma, and other ovarian cancer cells.

Recommended Dilutions

WB 1:500 - 1:1000

Immunogen Information

Gene ID

250

Swiss Prot

P05187

Immunogen

A synthetic peptide of human Placental alkaline phosphatase (PLAP)

Synonyms

ALP; IAP; ALPI; PALP; PLAP; PLAP-1; Placental alkaline phosphatase (PLAP)

Contact

 | www.abclonal.com

Product Information

Source

Rabbit

Isotype

IgG

Purification

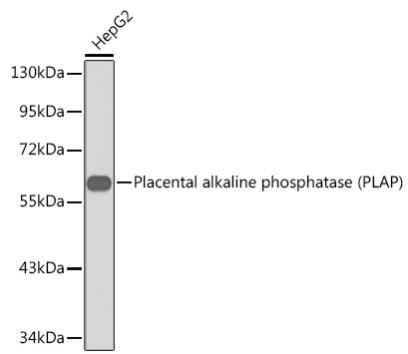
Affinity purification

Storage

Store at 4°C. Avoid freeze / thaw cycles.

Buffer: PBS with 0.02% sodium azide, pH7.3.

Validation Data



Western blot analysis of extracts of HepG2 cells, using Placental alkaline phosphatase (PLAP) antibody (A1529).

Secondary antibody: HRP Goat Anti-Rabbit IgG (H+L) (AS014) at 1:10000 dilution.

Lysates/proteins: 25µg per lane.

Blocking buffer: 3% nonfat dry milk in TBST.