

A1513

Leader in Biomolecular Solutions for Life Science



## ECM1 Rabbit pAb

Catalog No.: A1513

### Basic Information

---

**Observed MW**

50kDa

**Calculated MW**

61kDa

**Category**

Polyclonal Antibody

**Applications**

WB

**Cross-Reactivity**

Human,Mouse,Rat

### Background

---

This gene encodes a soluble protein that is involved in endochondral bone formation, angiogenesis, and tumor biology. It also interacts with a variety of extracellular and structural proteins, contributing to the maintenance of skin integrity and homeostasis. Mutations in this gene are associated with lipoid proteinosis disorder (also known as hyalinosis cutis et mucosae or Urbach-Wiethe disease) that is characterized by generalized thickening of skin, mucosae and certain viscera. Alternatively spliced transcript variants encoding distinct isoforms have been described for this gene.

### Recommended Dilutions

---

WB 1:500 - 1:1000

### Immunogen Information

---

**Gene ID**

1893

**Swiss Prot**

Q16610

**Immunogen**

Recombinant protein of human ECM1

**Synonyms**

URBWD; ECM1

### Contact

---



[www.abclonal.com](http://www.abclonal.com)

### Product Information

---

**Source**

Rabbit

**Isotype**

IgG

**Purification**

Affinity purification

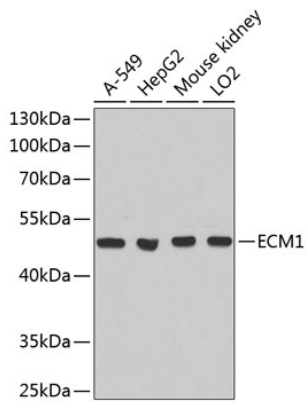
**Storage**

Store at -20°C. Avoid freeze / thaw cycles.

Buffer: PBS with 0.02% sodium azide, 50% glycerol, pH7.3.

## Validation Data

---



Western blot analysis of extracts of various cell lines, using ECM1 antibody (A1513).  
Secondary antibody: HRP Goat Anti-Rabbit IgG (H+L) (AS014) at 1:10000 dilution.  
Lysates/proteins: 25µg per lane.  
Blocking buffer: 3% nonfat dry milk in TBST.