

ISG20 Rabbit pAb

Catalog No.: A14744 **2 Publications**

Basic Information

Catalog No.

A14744

Observed MW

20kDa

Calculated MW

9kDa/20kDa

Category

Primary antibody

Applications

WB,IHC

Cross-Reactivity

Human, Mouse, Rat

Recommended Dilutions

WB	1:500 - 1:2000
IHC	1:50 - 1:100

Contact

 | www.abclonal.com

Background

Immunogen Information

Gene ID

3669

Swiss Prot

Q96AZ6

Immunogen

Recombinant fusion protein containing a sequence corresponding to amino acids 1-70 of human ISG20 (NP_002192.2).

Synonyms

ISG20;CD25;HEM45

Product Information

Source

Rabbit

Isotype

IgG

Purification

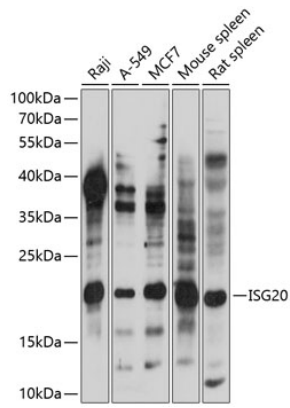
Affinity purification

Storage

Store at -20°C. Avoid freeze / thaw cycles.

Buffer: PBS with 0.02% sodium azide,50% glycerol,pH7.3.

Validation Data



Western blot analysis of extracts of various cell lines, using ISG20 antibody (A14744) at 1:1000 dilution.

Secondary antibody: HRP Goat Anti-Rabbit IgG (H+L) (AS014) at 1:10000 dilution.

Lysates/proteins: 25ug per lane.

Blocking buffer: 3% nonfat dry milk in TBST.

Detection: ECL Basic Kit (RM00020).

Exposure time: 10s.