

ADH1B Rabbit pAb

Catalog No.: A14613

Basic Information

Observed MW

40kDa

Calculated MW

40kDa

Category

Primary antibody

Applications

WB,IF/ICC,FC

Cross-Reactivity

Human

Background

The protein encoded by this gene is a member of the alcohol dehydrogenase family. Members of this enzyme family metabolize a wide variety of substrates, including ethanol, retinol, other aliphatic alcohols, hydroxysteroids, and lipid peroxidation products. This encoded protein, consisting of several homo- and heterodimers of alpha, beta, and gamma subunits, exhibits high activity for ethanol oxidation and plays a major role in ethanol catabolism. Three genes encoding alpha, beta and gamma subunits are tandemly organized in a genomic segment as a gene cluster. Two transcript variants encoding different isoforms have been found for this gene.

Recommended Dilutions

WB	1:500 - 1:1000
IF/ICC	1:20 - 1:50
FC	1:20 - 1:50

Immunogen Information

Gene ID	Swiss Prot
125	P00325

Immunogen

A synthetic peptide of human ADH1B

Synonyms

ADH2; HEL-S-117; ADH1B

Contact

 | www.abclonal.com

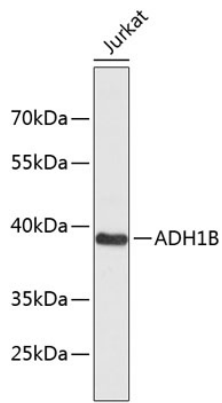
Product Information

Source	Isotype	Purification
Rabbit	IgG	Affinity purification

Storage

Store at 4°C. Avoid freeze / thaw cycles.
Buffer: PBS with 0.02% sodium azide,pH7.3.

Validation Data



Western blot analysis of extracts of Jurkat cells, using ADH1B antibody (A14613).
Secondary antibody: HRP Goat Anti-Rabbit IgG (H+L) (AS014) at 1:10000 dilution.
Lysates/proteins: 25 μ g per lane.
Blocking buffer: 3% nonfat dry milk in TBST.