

A14593

Leader in Biomolecular Solutions for Life Science

CORO1B Rabbit pAb

Catalog No.: A14593



Basic Information

Observed MW

54kDa

Calculated MW

54kDa

Category

Mouse Monoclonal Antibody

Applications

WB,ELISA

Cross-Reactivity

Rat

Background

Members of the coronin family, such as CORO1B, are WD repeat-containing actin-binding proteins that regulate cell motility (Cai et al., 2005 [PubMed 16027158]).

Recommended Dilutions

WB 1:500 - 1:2000

Immunogen Information

Gene ID

57175

Swiss Prot

Q9BR76

Immunogen

Recombinant fusion protein containing a sequence corresponding to amino acids 380-489 of human CORO1B (NP_065174.1).

Synonyms

CORONIN-2; CORO1B

Contact



www.abclonal.com

Product Information

Source

Rabbit

Isotype

IgG

Purification

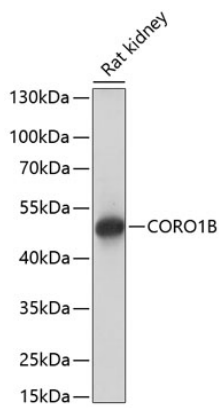
Affinity purification

Storage

Store at -20°C. Avoid freeze / thaw cycles.

Buffer: PBS with 0.01% thimerosal, 50% glycerol, pH7.3.

Validation Data



Western blot analysis of lysates from rat kidney, using CORO1B Rabbit pAb (A14593) at 1:1000 dilution.
Secondary antibody: HRP Goat Anti-Rabbit IgG (H+L) (AS014) at 1:10000 dilution.
Lysates/proteins: 25 μ g per lane.
Blocking buffer: 3% nonfat dry milk in TBST.
Detection: ECL Basic Kit (RM00020).
Exposure time: 10s.