

SLC2A9 Rabbit pAb

Catalog No.: A14592 **2 Publications**

Basic Information

Observed MW

55kDa

Calculated MW

59kDa

Category

Primary antibody

Applications

ELISA, WB

Cross-Reactivity

Human, Mouse

Background

This gene encodes a member of the SLC2A facilitative glucose transporter family. Members of this family play a significant role in maintaining glucose homeostasis. The encoded protein may play a role in the development and survival of chondrocytes in cartilage matrices. Two transcript variants encoding distinct isoforms have been identified for this gene.

Recommended Dilutions

WB 1:500 - 1:2000

Immunogen Information

Gene ID

56606

Swiss Prot

Q9NRM0

Immunogen

A synthetic peptide corresponding to a sequence within amino acids 429-529 of human SLC2A9 (NP_064425.2).

Synonyms

GLUT9; GLUTX; UAQTL2; URATv1; SLC2A9

Contact

 | www.abclonal.com

Product Information

Source

Rabbit

Isotype

IgG

Purification

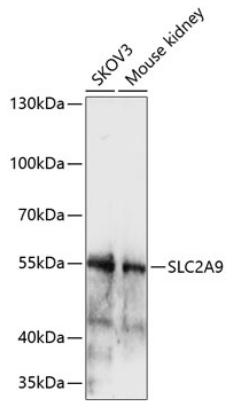
Affinity purification

Storage

Store at -20°C. Avoid freeze / thaw cycles.

Buffer: PBS with 0.01% thimerosal, 50% glycerol, pH7.3.

Validation Data



Western blot analysis of various lysates using SLC2A9 Rabbit pAb (A14592) at 1:1000 dilution.
Secondary antibody: HRP Goat Anti-Rabbit IgG (H+L) (AS014) at 1:10000 dilution.
Lysates/proteins: 25µg per lane.
Blocking buffer: 3% nonfat dry milk in TBST.
Detection: ECL Enhanced Kit (RM00021).
Exposure time: 6min.