

# HIGD1A Rabbit pAb

Catalog No.: A14582

## Basic Information

---

### Observed MW

14kDa

### Calculated MW

10kDa

### Category

Primary antibody

### Applications

ELISA, WB, IHC-P, IF/ICC

### Cross-Reactivity

Human

## Background

---

Acts upstream of or within negative regulation of apoptotic process. Located in mitochondrion and nucleoplasm. Part of protein-containing complex.

## Recommended Dilutions

---

<b>WB</b>	1:500 - 1:2000
<b>IHC-P</b>	1:50 - 1:100
<b>IF/ICC</b>	1:50 - 1:100

## Immunogen Information

---

<b>Gene ID</b>	<b>Swiss Prot</b>
25994	Q9Y241

### Immunogen

A synthetic peptide corresponding to a sequence within amino acids 1-93 of human HIGD1A (NP\_054775.2).

### Synonyms

HIG1; RCF1a; HIGD1A

## Contact

---

 | [www.abclonal.com](http://www.abclonal.com)

## Product Information

---

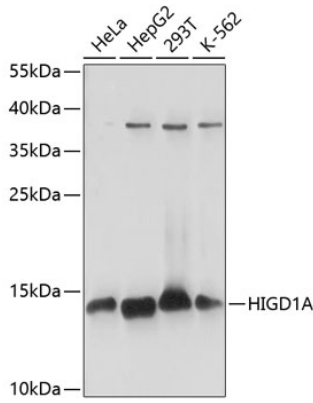
<b>Source</b>	<b>Isotype</b>	<b>Purification</b>
Rabbit	IgG	Affinity purification

### Storage

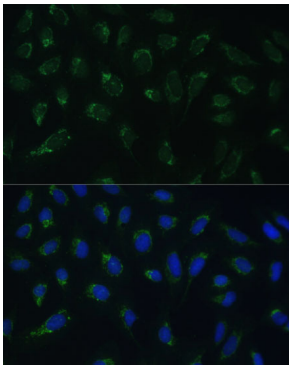
Store at -20°C. Avoid freeze / thaw cycles.

Buffer: PBS with 0.01% thimerosal, 50% glycerol, pH7.3.

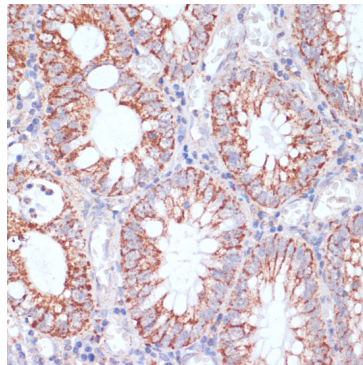
## Validation Data



Western blot analysis of various lysates using HIGD1A Rabbit pAb (A14582) at 1:1000 dilution. Secondary antibody: HRP Goat Anti-Rabbit IgG (H+L) (AS014) at 1:10000 dilution. Lysates/proteins: 25µg per lane. Blocking buffer: 3% nonfat dry milk in TBST. Detection: ECL Basic Kit (RM00020). Exposure time: 1s.



Immunofluorescence analysis of U-2 OS cells using HIGD1A Rabbit pAb (A14582) at dilution of 1:100 (40x lens). Secondary antibody: Cy3 Goat Anti-Rabbit IgG (H+L) (AS007) at 1:500 dilution. Blue: DAPI for nuclear staining.



Immunohistochemistry analysis of HIGD1A in paraffin-embedded human colon carcinoma using HIGD1A Rabbit pAb (A14582) at dilution of 1:100 (40x lens). Perform microwave antigen retrieval with 10 mM PBS buffer pH 7.2 before commencing with IHC staining protocol.