

# OAT3/SLC22A8 Rabbit pAb

Catalog No.: A14575 **1 Publications**

## Basic Information

### Observed MW

62kDa

### Calculated MW

60kDa

### Category

Primary antibody

### Applications

ELISA, WB

### Cross-Reactivity

Human, Mouse, Rat

## Background

This gene encodes a protein involved in the sodium-independent transport and excretion of organic anions, some of which are potentially toxic. The encoded protein is an integral membrane protein and appears to be localized to the basolateral membrane of the kidney. Multiple alternatively spliced transcript variants that encode different protein isoforms have been described for this gene.

## Recommended Dilutions

**WB** 1:100 - 1:500

## Immunogen Information

### Gene ID

9376

### Swiss Prot

Q8TCC7

### Immunogen

A synthetic peptide corresponding to a sequence within amino acids 1-100 of human OAT3/SLC22A8 (NP\_004245.2).

### Synonyms

OAT3; OAT3/SLC22A8

## Contact

 | [www.abclonal.com](http://www.abclonal.com)

## Product Information

### Source

Rabbit

### Isotype

IgG

### Purification

Affinity purification

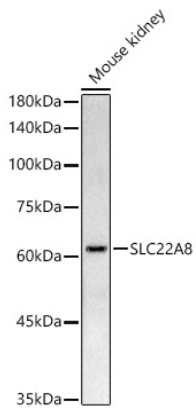
### Storage

Store at -20°C. Avoid freeze / thaw cycles.

Buffer: PBS with 0.05% proclin300, 50% glycerol, pH7.3.

## Validation Data

---



Western blot analysis of extracts of Mouse kidney, using OAT3/SLC22A8 Rabbit pAb antibody (A14575) at 1:500 dilution.

Secondary antibody: HRP Goat Anti-Rabbit IgG (H+L) (AS014) at 1:10000 dilution.

Lysates/proteins: 25µg per lane.

Blocking buffer: 3% nonfat dry milk in TBST.

Detection: ECL Basic Kit (RM00020).

Exposure time: 180s.