

A14563

Leader in Biomolecular Solutions for Life Science



# XPD/ERCC2 Rabbit pAb

Catalog No.: A14563

## Basic Information

### Observed MW

80kDa

### Calculated MW

87kDa

### Category

Mouse Monoclonal Antibody

### Applications

WB,ELISA

### Cross-Reactivity

Human,Mouse,Rat

## Background

The nucleotide excision repair pathway is a mechanism to repair damage to DNA. The protein encoded by this gene is involved in transcription-coupled nucleotide excision repair and is an integral member of the basal transcription factor BTF2/TFIIH complex. The gene product has ATP-dependent DNA helicase activity and belongs to the RAD3/XPD subfamily of helicases. Defects in this gene can result in three different disorders, the cancer-prone syndrome xeroderma pigmentosum complementation group D, trichothiodystrophy, and Cockayne syndrome. Alternatively spliced transcript variants encoding different isoforms have been found for this gene.

## Recommended Dilutions

WB 1:500 - 1:1000

## Immunogen Information

### Gene ID

2068

### Swiss Prot

P18074

### Immunogen

Recombinant fusion protein containing a sequence corresponding to amino acids 1-180 of human XPD/XPD/ERCC2 (NP\_001124339.1).

### Synonyms

EM9; TTD; XPD; TTD1; COFS2; TFIIH; XPD/ERCC2

## Contact



[www.abclonal.com](http://www.abclonal.com)

## Product Information

### Source

Rabbit

### Isotype

IgG

### Purification

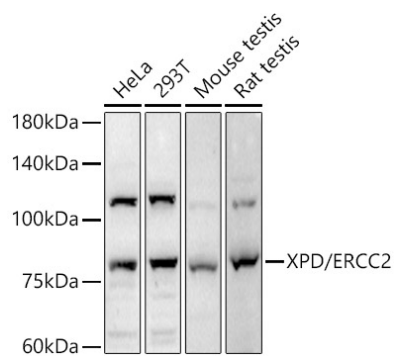
Affinity purification

### Storage

Store at -20°C. Avoid freeze / thaw cycles.

Buffer: PBS with 0.01% thimerosal,50% glycerol,pH7.3.

## Validation Data



Western blot analysis of extracts of various cell lines, using XPD/ERCC2 antibody (A14563) at 1:1000 dilution.

Secondary antibody: HRP Goat Anti-Rabbit IgG (H+L) (AS014) at 1:10000 dilution.

Lysates/proteins: 25µg per lane.

Blocking buffer: 3% nonfat dry milk in TBST.

Detection: ECL Basic Kit (RM00020).

Exposure time: 180s.