

A14557

Leader in Biomolecular Solutions for Life Science



## [KO Validated] PHD2/EGLN1 Rabbit pAb

Catalog No.: A14557 **KO Validated** **3 Publications**

### Basic Information

#### Observed MW

50kDa

#### Calculated MW

46kDa

#### Category

Polyclonal Antibody

#### Applications

WB,IHC-P,IF/ICC,ELISA

#### Cross-Reactivity

Human,Mouse,Rat

### Background

The protein encoded by this gene catalyzes the post-translational formation of 4-hydroxyproline in hypoxia-inducible factor (HIF) alpha proteins. HIF is a transcriptional complex that plays a central role in mammalian oxygen homeostasis. This protein functions as a cellular oxygen sensor, and under normal oxygen concentration, modification by prolyl hydroxylation is a key regulatory event that targets HIF subunits for proteasomal destruction via the von Hippel-Lindau ubiquitylation complex. Mutations in this gene are associated with erythrocytosis familial type 3 (ECYT3).

### Recommended Dilutions

WB	1:500 - 1:1000
IHC-P	1:50 - 1:200
IF/ICC	1:50 - 1:200

### Immunogen Information

#### Gene ID

54583

#### Swiss Prot

Q9GZT9

#### Immunogen

A synthetic peptide corresponding to a sequence within amino acids 1-100 of human PHD2/EGLN1 (NP\_071334.1).

#### Synonyms

HPH2; PHD2; SM20; ECYT3; HALAH; HPH-2; HIFPH2; ZMYND6; C1orf12; HIF-PH2; N1

### Contact



[www.abclonal.com](http://www.abclonal.com)

### Product Information

#### Source

Rabbit

#### Isotype

IgG

#### Purification

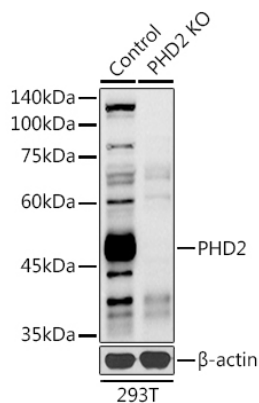
Affinity purification

#### Storage

Store at -20°C. Avoid freeze / thaw cycles.

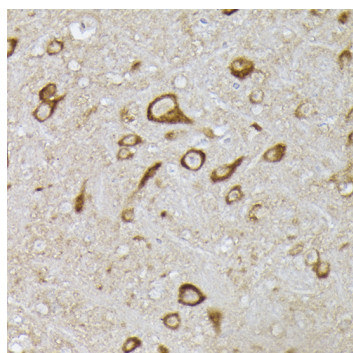
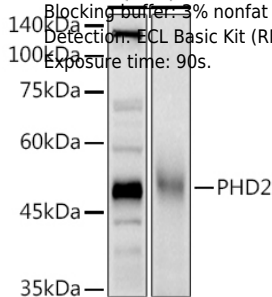
Buffer: PBS with 0.05% proclin300,50% glycerol,pH7.3.

## Validation Data

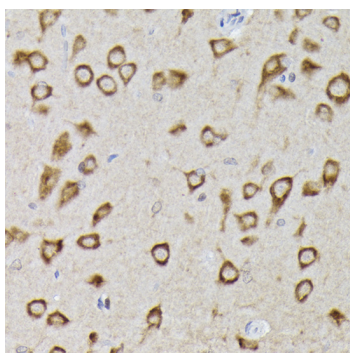


Western blot analysis of extracts from normal (control) and PHD2/EGLN1 knockout (KO) 293T cells, using PHD2/EGLN1 antibody (A14557) at 1:1000 dilution.  
 Secondary antibody: HRP Goat Anti-Rabbit IgG (H+L) (AS014) at 1:10000 dilution.  
 Lysates/proteins: 25µg per lane.  
 Blocking buffer: 3% nonfat dry milk in TBST.  
 Detection: ECL Basic Kit (RM00020).  
 Exposure time: 90s.

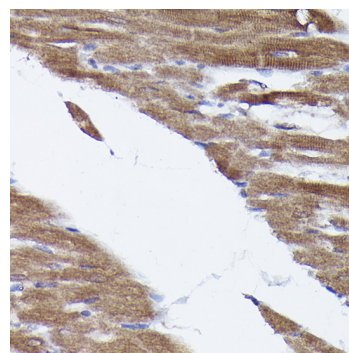
Western blot analysis of extracts of various cell lines, using PHD2/EGLN1 antibody (A14557) at 1:1000 dilution.  
 Secondary antibody: HRP Goat Anti-Rabbit IgG (H+L) (AS014) at 1:10000 dilution.  
 Lysates/proteins: 25µg per lane.  
 Blocking buffer: 3% nonfat dry milk in TBST.  
 Detection: ECL Basic Kit (RM00020).  
 Exposure time: 90s.



Immunohistochemistry analysis of paraffin-embedded mouse brain using [KO Validated] PHD2/EGLN1 Rabbit pAb (A14557) at dilution of 1:100 (40x lens). Perform high pressure antigen retrieval with 10 mM citrate buffer pH 6.0 before commencing with IHC staining protocol.



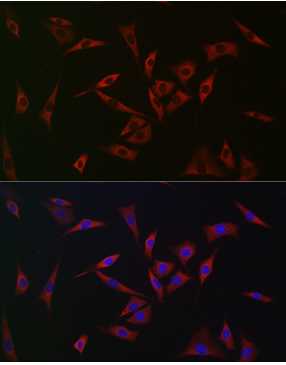
Immunohistochemistry analysis of paraffin-embedded rat brain using [KO Validated] PHD2/EGLN1 Rabbit pAb (A14557) at dilution of 1:100 (40x lens). Perform high pressure antigen retrieval with 10 mM citrate buffer pH 6.0 before commencing with IHC staining protocol.



Immunohistochemistry analysis of paraffin-embedded rat heart using [KO Validated] PHD2/EGLN1 Rabbit pAb (A14557) at dilution of 1:100 (40x lens). Perform high pressure antigen retrieval with 10 mM citrate buffer pH 6.0 before commencing with IHC staining protocol.

## Validation Data

---



Immunofluorescence analysis of NIH/3T3 cells using [KO Validated] PHD2/EGLN1 Rabbit pAb (A14557) at dilution of 1:100 (40x lens). Blue: DAPI for nuclear staining.