

A14554

Leader in Biomolecular Solutions for Life Science



γ -Tubulin Rabbit pAb

Catalog No.: A14554

Basic Information

Observed MW

51kDa

Calculated MW

51kDa

Category

Mouse Monoclonal Antibody

Applications

WB,ELISA

Cross-Reactivity

Human,Mouse,Rat

Background

This gene encodes a member of the tubulin superfamily. The encoded protein localizes to the centrosome where it binds to microtubules as part of a complex referred to as the gamma-tubulin ring complex. The protein mediates microtubule nucleation and is required for microtubule formation and progression of the cell cycle. A pseudogene of this gene is found on chromosome 7.

Recommended Dilutions

WB 1:500 - 1:2000

Immunogen Information

Gene ID

7283

Swiss Prot

P23258

Immunogen

A synthetic peptide corresponding to a sequence within amino acids 350-450 of human γ -Tubulin (NP_001061.2).

Synonyms

TUBG; GCP-1; CDCBM4; TUBGCP1; γ -Tubulin

Contact



www.abclonal.com

Product Information

Source

Rabbit

Isotype

IgG

Purification

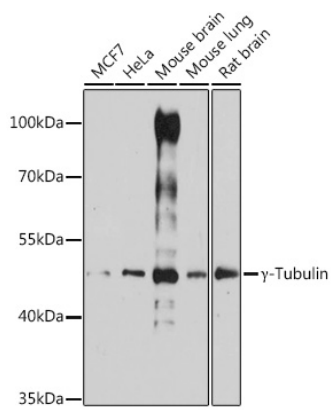
Affinity purification

Storage

Store at -20°C. Avoid freeze / thaw cycles.

Buffer: PBS with 0.01% thimerosal,50% glycerol,pH7.3.

Validation Data



Western blot analysis of various lysates using γ -Tubulin Rabbit pAb (A14554) at 1:3000 dilution.
Secondary antibody: HRP Goat Anti-Rabbit IgG (H+L) (AS014) at 1:10000 dilution.
Lysates/proteins: 25 μ g per lane.
Blocking buffer: 3% nonfat dry milk in TBST.
Detection: ECL Basic Kit (RM00020).
Exposure time: 90s.