

A14547

Leader in Biomolecular Solutions for Life Science



GNAI2 Rabbit pAb

Catalog No.: A14547

Basic Information

Observed MW

40kDa

Calculated MW

40kDa

Category

Mouse Monoclonal Antibody

Applications

WB,IF/ICC,ELISA

Cross-Reactivity

Human,Mouse,Rat

Background

The protein encoded by this gene is an alpha subunit of guanine nucleotide binding proteins (G proteins). The encoded protein contains the guanine nucleotide binding site and is involved in the hormonal regulation of adenylate cyclase. Several transcript variants encoding different isoforms have been found for this gene.

Recommended Dilutions

WB 1:500 - 1:2000

IF/ICC 1:50 - 1:200

Immunogen Information

Gene ID

2771

Swiss Prot

P04899

Immunogen

Recombinant fusion protein containing a sequence corresponding to amino acids 1-355 of human GNAI2 (NP_002061.1).

Synonyms

GIP; HG1C; GNAI2B; H_LUCA15.1; H_LUCA16.1; GNAI2

Contact



www.abclonal.com

Product Information

Source

Rabbit

Isotype

IgG

Purification

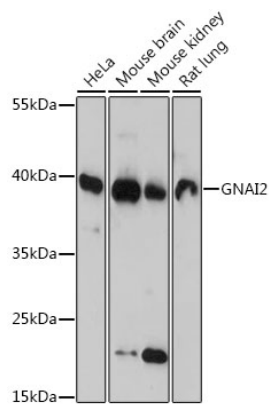
Affinity purification

Storage

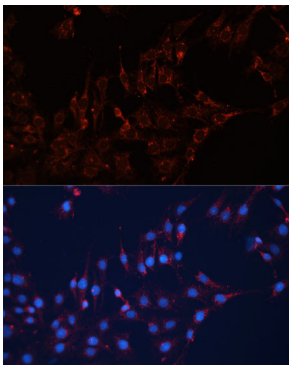
Store at -20°C. Avoid freeze / thaw cycles.

Buffer: PBS with 0.01% thimerosal,50% glycerol,pH7.3.

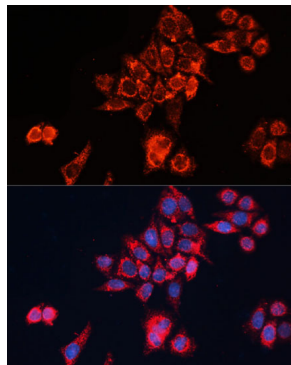
Validation Data



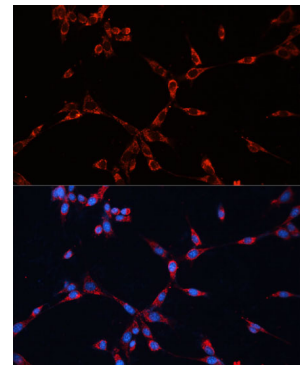
Western blot analysis of various lysates using GNAI2 Rabbit pAb (A14547) at 1:1000 dilution. Secondary antibody: HRP Goat Anti-Rabbit IgG (H+L) (AS014) at 1:10000 dilution. Lysates/proteins: 25µg per lane. Blocking buffer: 3% nonfat dry milk in TBST. Detection: ECL Basic Kit (RM00020). Exposure time: 90s.



Immunofluorescence analysis of C6 cells using GNAI2 Rabbit pAb (A14547) at dilution of 1:100 (40x lens). Secondary antibody: Cy3 Goat Anti-Rabbit IgG (H+L) (AS007) at 1:500 dilution. Blue: DAPI for nuclear staining.



Immunofluorescence analysis of HeLa cells using GNAI2 Rabbit pAb (A14547) at dilution of 1:100 (40x lens). Secondary antibody: Cy3 Goat Anti-Rabbit IgG (H+L) (AS007) at 1:500 dilution. Blue: DAPI for nuclear staining.



Immunofluorescence analysis of NIH-3T3 cells using GNAI2 Rabbit pAb (A14547) at dilution of 1:100 (40x lens). Secondary antibody: Cy3 Goat Anti-Rabbit IgG (H+L) (AS007) at 1:500 dilution. Blue: DAPI for nuclear staining.