

A14524

Leader in Biomolecular Solutions for Life Science



# ELMOD2 Rabbit pAb

Catalog No.: A14524

## Basic Information

---

### Observed MW

34kDa

### Calculated MW

35kDa

### Category

Mouse Monoclonal Antibody

### Applications

WB,ELISA

### Cross-Reactivity

Rat

## Background

---

This gene encodes one of six engulfment and motility (ELMO) domain-containing proteins. This gene is thought to play a role in antiviral responses. Mutations in this gene may be involved in the cause of familial idiopathic pulmonary fibrosis.

## Recommended Dilutions

---

WB 1:1000 - 1:5000

## Immunogen Information

---

### Gene ID

255520

### Swiss Prot

Q8IZ81

### Immunogen

Recombinant fusion protein containing a sequence corresponding to amino acids 5-95 of human ELMOD2 (NP\_714913.1).

### Synonyms

9830169G11Rik; ELMOD2

## Contact

---



[www.abclonal.com](http://www.abclonal.com)

## Product Information

---

### Source

Rabbit

### Isotype

IgG

### Purification

Affinity purification

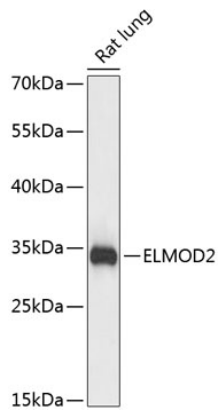
### Storage

Store at -20°C. Avoid freeze / thaw cycles.

Buffer: PBS with 0.01% thimerosal, 50% glycerol, pH7.3.

## Validation Data

---



Western blot analysis of lysates from rat lung, using ELMOD2 Rabbit pAb (A14524) at 1:3000 dilution.  
Secondary antibody: HRP Goat Anti-Rabbit IgG (H+L) (AS014) at 1:10000 dilution.  
Lysates/proteins: 25 $\mu$ g per lane.  
Blocking buffer: 3% nonfat dry milk in TBST.  
Detection: ECL Basic Kit (RM00020).  
Exposure time: 5s.