

# NGDN Rabbit pAb

Catalog No.: A14509

## Basic Information

### Observed MW

Refer to Figures

### Calculated MW

36kDa

### Category

Primary antibody

### Applications

ELISA, WB

### Cross-Reactivity

Human, Rat

## Background

Neuroguidin is an EIF4E (MIM 133440)-binding protein that interacts with CPEB (MIM 607342) and functions as a translational regulatory protein during development of the vertebrate nervous system (Jung et al., 2006 [PubMed 16705177]).

## Recommended Dilutions

**WB** 1:500 - 1:2000

## Immunogen Information

### Gene ID

25983

### Swiss Prot

Q8NEJ9

### Immunogen

Recombinant fusion protein containing a sequence corresponding to amino acids 61-209 of human NGDN (NP\_001036100.1).

### Synonyms

NGD; LCP5; CANu1; lpd-2; C14orf120; NGDN

## Contact

 | [www.abclonal.com](http://www.abclonal.com)

## Product Information

### Source

Rabbit

### Isotype

IgG

### Purification

Affinity purification

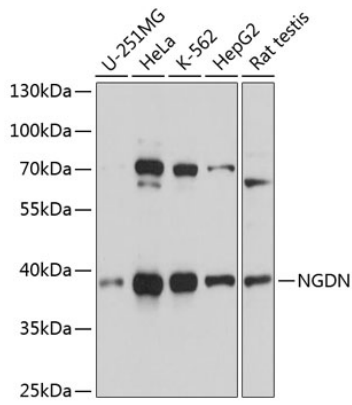
### Storage

Store at -20°C. Avoid freeze / thaw cycles.

Buffer: PBS with 0.01% thimerosal, 50% glycerol, pH7.3.

## Validation Data

---



Western blot analysis of various lysates using NGDN Rabbit pAb (A14509) at 1:3000 dilution.  
Secondary antibody: HRP Goat Anti-Rabbit IgG (H+L) (AS014) at 1:10000 dilution.  
Lysates/proteins: 25µg per lane.  
Blocking buffer: 3% nonfat dry milk in TBST.  
Detection: ECL Basic Kit (RM00020).  
Exposure time: 5s.