

A14500

Leader in Biomolecular Solutions for Life Science



# RBX1 Rabbit pAb

Catalog No.: A14500

## Basic Information

### Observed MW

12kDa

### Calculated MW

12kDa

### Category

Polyclonal Antibody

### Applications

WB, ELISA

### Cross-Reactivity

Mouse, Rat

## Background

This locus encodes a RING finger-like domain-containing protein. The encoded protein interacts with cullin proteins and likely plays a role in ubiquitination processes necessary for cell cycle progression. This protein may also affect protein turnover. Related pseudogenes exist on chromosomes 2 and 5.

## Recommended Dilutions

WB 1:500 - 1:2000

## Immunogen Information

### Gene ID

9978

### Swiss Prot

P62877

### Immunogen

A synthetic peptide corresponding to a sequence within amino acids 1-100 of human RBX1 (NP\_055063.1).

### Synonyms

ROC1; RNF75; BA554C12.1; RBX1

## Contact



[www.abclonal.com](http://www.abclonal.com)

## Product Information

### Source

Rabbit

### Isotype

IgG

### Purification

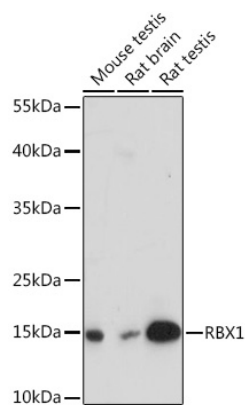
Affinity purification

### Storage

Store at -20°C. Avoid freeze / thaw cycles.

Buffer: PBS with 0.01% thimerosal, 50% glycerol, pH 7.3.

# Validation Data



Western blot analysis of various lysates using RBX1 Rabbit pAb (A14500) at 1:3000 dilution.  
Secondary antibody: HRP Goat Anti-Rabbit IgG (H+L) (AS014) at 1:10000 dilution.  
Lysates/proteins: 25µg per lane.  
Blocking buffer: 3% nonfat dry milk in TBST.  
Detection: ECL Enhanced Kit (RM00021).  
Exposure time: 90s.