

BRIX1 Rabbit pAb

Catalog No.: A14481 **1 Publications**

Basic Information

Observed MW

41kDa

Calculated MW

41kDa

Category

Primary antibody

Applications

ELISA, WB, IHC-P

Cross-Reactivity

Human, Mouse, Rat

Background

Enables RNA binding activity. Predicted to be involved in ribosomal large subunit assembly. Located in chromosome and nucleolus.

Recommended Dilutions

WB	1:500 - 1:2000
IHC-P	1:50 - 1:100

Immunogen Information

Gene ID	Swiss Prot
55299	Q8TDN6

Immunogen

Recombinant fusion protein containing a sequence corresponding to amino acids 1-353 of human BRIX1 (NP_060791.3).

Synonyms

BRIX; BXDC2; BRIX1

Contact

 | www.abclonal.com

Product Information

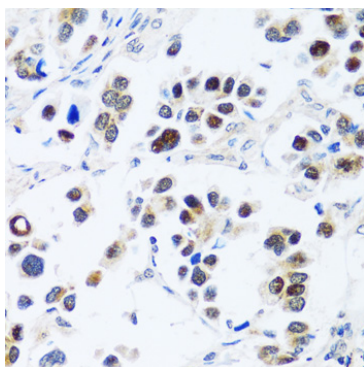
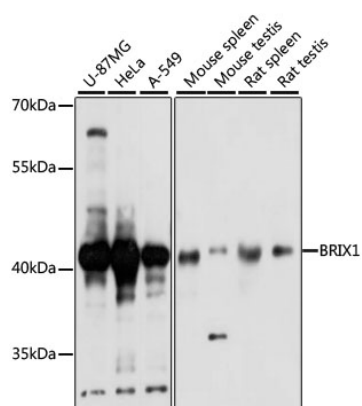
Source	Isotype	Purification
Rabbit	IgG	Affinity purification

Storage

Store at -20°C. Avoid freeze / thaw cycles.

Buffer: PBS with 0.01% thimerosal, 50% glycerol, pH 7.3.

Validation Data



Immunohistochemistry analysis of BRIX1 in paraffin-embedded human lung cancer using BRIX1 Rabbit pAb (A14481) at dilution of 1:100 (40x lens). Perform microwave antigen retrieval with 10 mM PBS buffer pH 7.2 before commencing with IHC staining protocol.