

# RANBP6 Rabbit pAb

Catalog No.: A14477

## Basic Information

### Observed MW

140kDa

### Calculated MW

125kDa

### Category

Primary antibody

### Applications

ELISA, WB

### Cross-Reactivity

Mouse, Rat

## Background

Predicted to enable nuclear import signal receptor activity and nuclear localization sequence binding activity. Predicted to be involved in protein import into nucleus. Predicted to be active in cytoplasm and nucleus.

## Recommended Dilutions

WB 1:500 - 1:2000

## Immunogen Information

### Gene ID

26953

### Swiss Prot

O60518

### Immunogen

Recombinant fusion protein containing a sequence corresponding to amino acids 1-70 of human RANBP6 (NP\_036548.1).

### Synonyms

RANBP6

## Contact

 | [www.abclonal.com](http://www.abclonal.com)

## Product Information

### Source

Rabbit

### Isotype

IgG

### Purification

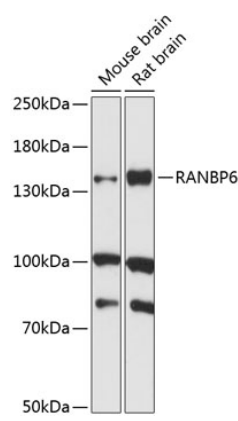
Affinity purification

### Storage

Store at -20°C. Avoid freeze / thaw cycles.

Buffer: PBS with 0.01% thimerosal, 50% glycerol, pH7.3.

# Validation Data



Western blot analysis of various lysates using RANBP6 Rabbit pAb (A14477) at 1:1000 dilution.  
Secondary antibody: HRP Goat Anti-Rabbit IgG (H+L) (A5014) at 1:10000 dilution.  
Lysates/proteins: 25µg per lane.  
Blocking buffer: 3% nonfat dry milk in TBST.  
Detection: ECL Basic Kit (RM00020).  
Exposure time: 30s.