

NSA2 Rabbit pAb

Catalog No.: A14475 **2 Publications**

Basic Information

Observed MW

37kDa

Calculated MW

30kDa

Category

Primary antibody

Applications

ELISA, WB

Cross-Reactivity

Human, Mouse, Rat

Background

This gene encodes a nucleolar protein involved in cell cycle regulation and proliferation. This gene was identified based on sequence similarity to a highly conserved *Saccharomyces cerevisiae* gene encoding a pre-ribosomal protein, which is involved in large ribosomal subunit biogenesis. The encoded protein is found at elevated levels in diabetic nephropathy. Alternative splicing results in multiple transcript variants. Several related pseudogenes have been identified.

Recommended Dilutions

WB 1:500 - 1:2000

Immunogen Information

Gene ID

10412

Swiss Prot

O95478

Immunogen

Recombinant fusion protein containing a sequence corresponding to amino acids 1-260 of human NSA2 (NP_055701.1).

Synonyms

HCLG1; TINP1; CDK105; HCL-G1; HUSSY29; HUSSY-29; NSA2

Contact

 | www.abclonal.com

Product Information

Source

Rabbit

Isotype

IgG

Purification

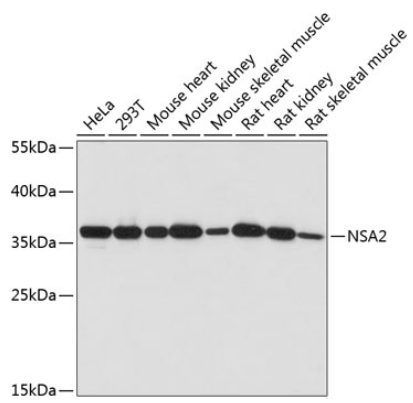
Affinity purification

Storage

Store at -20°C. Avoid freeze / thaw cycles.

Buffer: PBS with 0.01% thimerosal, 50% glycerol, pH7.3.

Validation Data



Western blot analysis of various lysates using NSA2 Rabbit pAb (A14475) at 1:1000 dilution.
Secondary antibody: HRP Goat Anti-Rabbit IgG (H+L) (AS014) at 1:10000 dilution.
Lysates/proteins: 25µg per lane.
Blocking buffer: 3% nonfat dry milk in TBST.
Detection: ECL Basic Kit (RM00020).
Exposure time: 60s.