

CA13 Rabbit pAb

Catalog No.: A14467

Basic Information

Observed MW

29kDa

Calculated MW

29kDa

Category

Primary antibody

Applications

ELISA, WB, IHC-P

Cross-Reactivity

Human, Mouse

Background

Predicted to enable carbonate dehydratase activity. Predicted to be involved in one-carbon metabolic process. Predicted to be located in intracellular membrane-bounded organelle and myelin sheath. Predicted to be active in cytosol.

Recommended Dilutions

WB	1:500 - 1:2000
IHC-P	1:50 - 1:100

Immunogen Information

Gene ID	Swiss Prot
377677	Q8N1Q1

Immunogen

Recombinant fusion protein containing a sequence corresponding to amino acids 1-220 of human CA13 (NP_940986.1).

Synonyms

CAXIII; CA13

Contact

 | www.abclonal.com

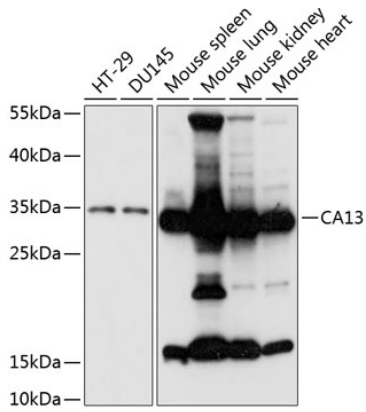
Product Information

Source	Isotype	Purification
Rabbit	IgG	Affinity purification

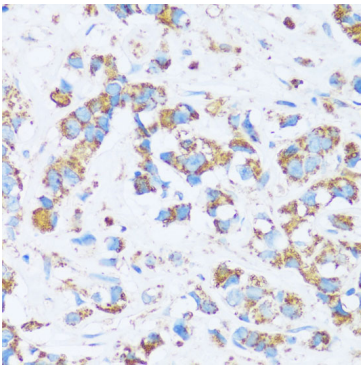
Storage

Store at -20°C. Avoid freeze / thaw cycles.
Buffer: PBS with 0.01% thimerosal, 50% glycerol, pH7.3.

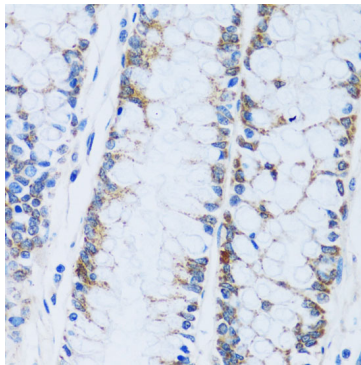
Validation Data



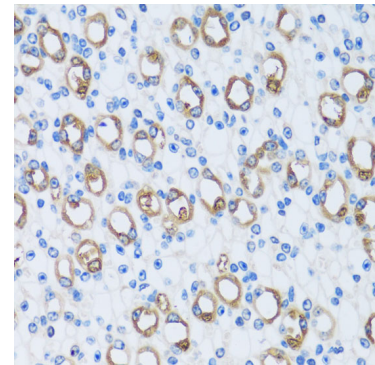
Western blot analysis of various lysates using CA13 Rabbit pAb (A14467) at 1:3000 dilution. Secondary antibody: HRP Goat Anti-Rabbit IgG (H+L) (AS014) at 1:10000 dilution. Lysates/proteins: 25µg per lane. Blocking buffer: 3% nonfat dry milk in TBST. Detection: ECL Basic Kit (RM00020). Exposure time: 90s.



Immunohistochemistry analysis of CA13 in paraffin-embedded human breast cancer using CA13 Rabbit pAb (A14467) at dilution of 1:100 (40x lens). Perform microwave antigen retrieval with 10 mM PBS buffer pH 7.2 before commencing with IHC staining protocol.



Immunohistochemistry analysis of CA13 in paraffin-embedded human colon using CA13 Rabbit pAb (A14467) at dilution of 1:100 (40x lens). Perform microwave antigen retrieval with 10 mM PBS buffer pH 7.2 before commencing with IHC staining protocol.



Immunohistochemistry analysis of CA13 in paraffin-embedded mouse kidney using CA13 Rabbit pAb (A14467) at dilution of 1:100 (40x lens). Perform microwave antigen retrieval with 10 mM PBS buffer pH 7.2 before commencing with IHC staining protocol.