

CPLX4 Rabbit pAb

Catalog No.: A14464

Basic Information

Observed MW

18kDa

Calculated MW

18kDa

Category

Primary antibody

Applications

ELISA, WB

Cross-Reactivity

Rat

Background

This gene likely encodes a member of the complexin family. The encoded protein may be involved in synaptic vesicle exocytosis.

Recommended Dilutions

WB 1:500 - 1:2000

Immunogen Information

Gene ID

339302

Swiss Prot

Q7Z7G2

Immunogen

Recombinant fusion protein containing a sequence corresponding to amino acids 1-160 of human CPLX4 (NP_857637.1).

Synonyms

CPXIV; CPX-IV; CPLX4

Contact

 | www.abclonal.com

Product Information

Source

Rabbit

Isotype

IgG

Purification

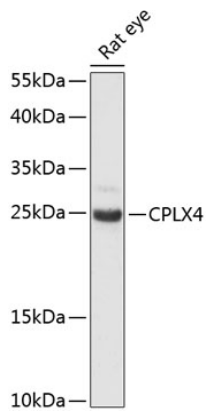
Affinity purification

Storage

Store at -20°C. Avoid freeze / thaw cycles.

Buffer: PBS with 0.01% thimerosal, 50% glycerol, pH7.3.

Validation Data



Western blot analysis of extracts of rat eye, using CPLX4 antibody (A14464) at 1:3000 dilution.
Secondary antibody: HRP Goat Anti-Rabbit IgG (H+L) (AS014) at 1:10000 dilution.
Lysates/proteins: 25µg per lane.
Blocking buffer: 3% nonfat dry milk in TBST.
Detection: ECL Enhanced Kit (RM00021).
Exposure time: 90s.