

A14456

Leader in Biomolecular Solutions for Life Science



# ZMAT2 Rabbit pAb

Catalog No.: A14456

## Basic Information

---

### Observed MW

24kDa

### Calculated MW

24kDa

### Category

Polyclonal Antibody

### Applications

WB,ELISA

### Cross-Reactivity

Human,Mouse,Rat

## Background

---

Predicted to enable DNA binding activity and zinc ion binding activity. Involved in mRNA splicing, via spliceosome. Located in nucleus. Part of U2-type precatalytic spliceosome.

## Recommended Dilutions

---

WB 1:1000 - 1:5000

## Immunogen Information

---

### Gene ID

153527

### Swiss Prot

Q96NC0

### Immunogen

Recombinant fusion protein containing a sequence corresponding to amino acids 1-199 of human ZMAT2 (NP\_653324.1).

### Synonyms

Snu23; Ptg-12; ZMAT2

## Contact

---



[www.abclonal.com](http://www.abclonal.com)

## Product Information

---

### Source

Rabbit

### Isotype

IgG

### Purification

Affinity purification

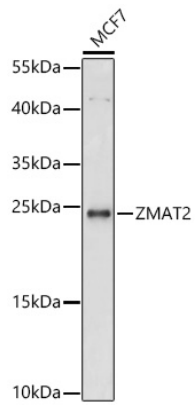
### Storage

Store at -20°C. Avoid freeze / thaw cycles.

Buffer: PBS with 0.01% thimerosal,50% glycerol,pH7.3.

## Validation Data

---



Western blot analysis of lysates from MCF7 cells using ZMAT2 Rabbit pAb(A14456) at 1:1000 dilution.  
Secondary antibody: HRP Goat Anti-Rabbit IgG (H+L) (AS014) at 1:10000 dilution.  
Lysates/proteins: 25 µg per lane.  
Blocking buffer: 3% nonfat dry milk in TBST.  
Detection: ECL Basic Kit (RM00020).  
Exposure time: 30s.