

A14455

Leader in Biomolecular Solutions for Life Science



ALDH1L2 Rabbit pAb

Catalog No.: A14455

Basic Information

Observed MW

102kDa

Calculated MW

102kDa

Category

Polyclonal Antibody

Applications

WB,ELISA

Cross-Reactivity

Human,Mouse,Rat

Background

This gene encodes a member of both the aldehyde dehydrogenase superfamily and the formyl transferase superfamily. This member is the mitochondrial form of 10-formyltetrahydrofolate dehydrogenase (FDH), which converts 10-formyltetrahydrofolate to tetrahydrofolate and CO₂ in an NADP(+)-dependent reaction, and plays an essential role in the distribution of one-carbon groups between the cytosolic and mitochondrial compartments of the cell. Alternatively spliced transcript variants have been found for this gene.

Recommended Dilutions

WB 1:1000 - 1:5000

Immunogen Information

Gene ID

160428

Swiss Prot

Q3SY69

Immunogen

Recombinant fusion protein containing a sequence corresponding to amino acids 280-480 of human ALDH1L2 (NP_001029345.2).

Synonyms

mtFDH; ALDH1L2

Contact



www.abclonal.com

Product Information

Source

Rabbit

Isotype

IgG

Purification

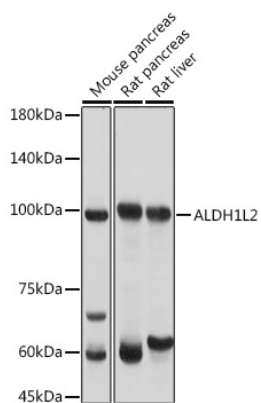
Affinity purification

Storage

Store at -20°C. Avoid freeze / thaw cycles.

Buffer: PBS with 0.01% thimerosal,50% glycerol,pH7.3.

Validation Data



Western blot analysis of various lysates using ALDH1L2 Rabbit pAb (A14455) at 1:3000 dilution.
Secondary antibody: HRP Goat Anti-Rabbit IgG (H+L) (AS014) at 1:10000 dilution.
Lysates/proteins: 25 μ g per lane.
Blocking buffer: 3% nonfat dry milk in TBST.
Detection: ECL Basic Kit (RM00020).
Exposure time: 1s.