

RFTN2 Rabbit pAb

Catalog No.: A14445

Basic Information

Observed MW

56kDa

Calculated MW

56kDa

Category

Primary antibody

Applications

ELISA, WB

Cross-Reactivity

Mouse, Rat

Background

Predicted to act upstream of or within dsRNA transport and response to exogenous dsRNA. Predicted to be located in plasma membrane.

Recommended Dilutions

WB 1:500 - 1:2000

Immunogen Information

Gene ID

130132

Swiss Prot

Q52LD8

Immunogen

Recombinant fusion protein containing a sequence corresponding to amino acids 412-501 of human RFTN2 (NP_653230.2).

Synonyms

C2orf11; Raftlin-2; RFTN2

Contact

 | www.abclonal.com

Product Information

Source

Rabbit

Isotype

IgG

Purification

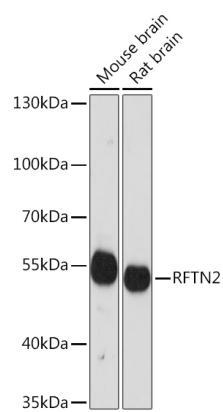
Affinity purification

Storage

Store at -20°C. Avoid freeze / thaw cycles.

Buffer: PBS with 0.01% thimerosal, 50% glycerol, pH7.3.

Validation Data



Western blot analysis of various lysates using RFTN2 Rabbit pAb (A14445) at 1:3000 dilution.
Secondary antibody: HRP Goat Anti-Rabbit IgG (H+L) (A5014) at 1:10000 dilution.
Lysates/proteins: 25µg per lane.
Blocking buffer: 3% nonfat dry milk in TBST.
Detection: ECL Basic Kit (RM00020).
Exposure time: 30s.