

# PLK5 Rabbit pAb

Catalog No.: A14442

## Basic Information

### Observed MW

36kDa, 66kDa

### Calculated MW

36kDa

### Category

Primary antibody

### Applications

ELISA, WB

### Cross-Reactivity

Human, Rat

## Background

Predicted to enable ATP binding activity and protein kinase activity. Involved in several processes, including defense response to tumor cell; positive regulation of neuron projection development; and regulation of G1/S transition of mitotic cell cycle. Located in cytoplasm.

## Recommended Dilutions

WB 1:500 - 1:2000

## Immunogen Information

### Gene ID

126520

### Swiss Prot

Q496M5

### Immunogen

Recombinant fusion protein containing a sequence corresponding to amino acids 1-336 of human PLK5 (NP\_001230008.1).

### Synonyms

PLK-5; PLK5P; SgK384ps; PLK5

## Contact

 | [www.abclonal.com](http://www.abclonal.com)

## Product Information

### Source

Rabbit

### Isotype

IgG

### Purification

Affinity purification

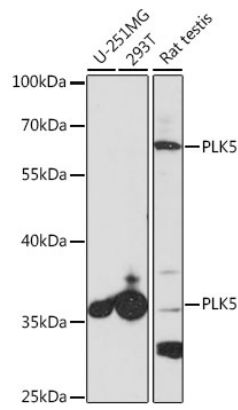
### Storage

Store at -20°C. Avoid freeze / thaw cycles.

Buffer: PBS with 0.01% thimerosal, 50% glycerol, pH7.3.

## Validation Data

---



Western blot analysis of extracts of various cell lines, using PLK5 antibody (A14442) at 1:1000 dilution.

Secondary antibody: HRP Goat Anti-Rabbit IgG (H+L) (AS014) at 1:10000 dilution.

Lysates/proteins: 25µg per lane.

Blocking buffer: 3% nonfat dry milk in TBST.

Detection: ECL Basic Kit (RM00020).

Exposure time: 60s.