

CCDC124 Rabbit pAb

Catalog No.: A14436

Basic Information

Observed MW
26kDa

Calculated MW
26kDa

Category
Primary antibody

Applications
ELISA, WB, IHC-P

Cross-Reactivity
Human, Mouse, Rat

Background

Enables RNA binding activity. Predicted to be involved in cell division. Located in cytosol and plasma membrane.

Recommended Dilutions

WB	1:500 - 1:2000
IHC-P	1:50 - 1:200

Immunogen Information

Gene ID	Swiss Prot
115098	Q96CT7

Immunogen
Recombinant fusion protein containing a sequence corresponding to amino acids 1-223 of human CCDC124 (NP_612451.1).

Synonyms
Lso2; oxs1; CCDC124

Contact

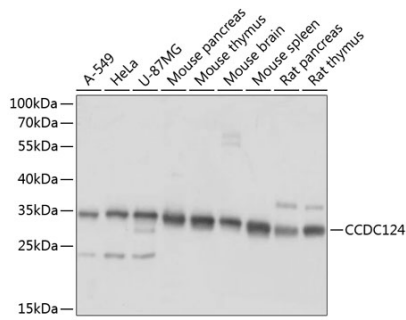
 | www.abclonal.com

Product Information

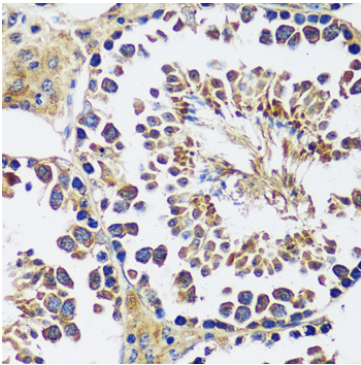
Source	Isotype	Purification
Rabbit	IgG	Affinity purification

Storage
Store at -20°C. Avoid freeze / thaw cycles.
Buffer: PBS with 0.01% thimerosal, 50% glycerol, pH7.3.

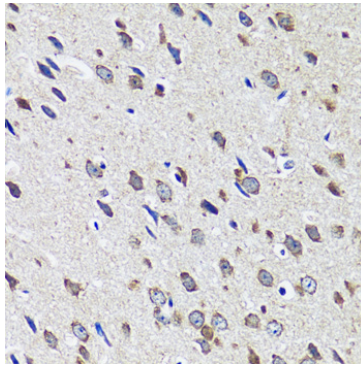
Validation Data



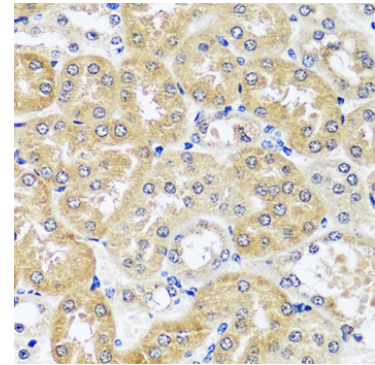
Western blot analysis of various lysates using CCDC124 Rabbit pAb (A14436) at 1:1000 dilution. Secondary antibody: HRP Goat Anti-Rabbit IgG (H+L) (AS014) at 1:10000 dilution. Lysates/proteins: 25µg per lane. Blocking buffer: 3% nonfat dry milk in TBST. Detection: ECL Basic Kit (RM00020). Exposure time: 1s.



Immunohistochemistry analysis of CCDC124 in paraffin-embedded mouse testis using CCDC124 Rabbit pAb (A14436) at dilution of 1:100 (40x lens). Perform microwave antigen retrieval with 10 mM PBS buffer pH 7.2 before commencing with IHC staining protocol.



Immunohistochemistry analysis of CCDC124 in paraffin-embedded mouse brain using CCDC124 Rabbit pAb (A14436) at dilution of 1:100 (40x lens). Perform microwave antigen retrieval with 10 mM PBS buffer pH 7.2 before commencing with IHC staining protocol.



Immunohistochemistry analysis of CCDC124 in paraffin-embedded mouse kidney using CCDC124 Rabbit pAb (A14436) at dilution of 1:100 (40x lens). Perform microwave antigen retrieval with 10 mM PBS buffer pH 7.2 before commencing with IHC staining protocol.