

A14433

Leader in Biomolecular Solutions for Life Science



LONRF1 Rabbit pAb

Catalog No.: A14433

Basic Information

Observed MW

87kDa

Calculated MW

87kDa

Category

Mouse Monoclonal Antibody

Applications

WB,ELISA

Cross-Reactivity

Human,Mouse,Rat

Background

Predicted to enable metal ion binding activity. Predicted to be located in cytosol.

Recommended Dilutions

WB 1:500 - 1:2000

Immunogen Information

Gene ID

91694

Swiss Prot

Q17RB8

Immunogen

Recombinant fusion protein containing a sequence corresponding to amino acids 584-773 of human LONRF1 (NP_689484.3).

Synonyms

RNF191; LONRF1

Contact



www.abclonal.com

Product Information

Source

Rabbit

Isotype

IgG

Purification

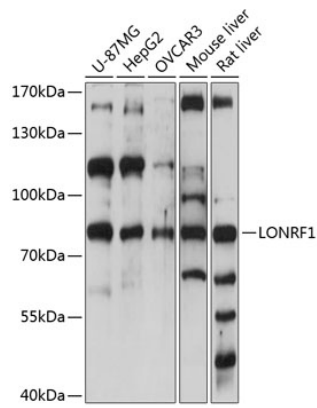
Affinity purification

Storage

Store at -20°C. Avoid freeze / thaw cycles.

Buffer: PBS with 0.01% thimerosal,50% glycerol,pH7.3.

Validation Data



Western blot analysis of various lysates using LONRF1 Rabbit pAb (A14433) at 1:1000 dilution.
Secondary antibody: HRP Goat Anti-Rabbit IgG (H+L) (AS014) at 1:10000 dilution.
Lysates/proteins: 25µg per lane.
Blocking buffer: 3% nonfat dry milk in TBST.
Detection: ECL Basic Kit (RM00020).
Exposure time: 1s.