

A14429

Leader in Biomolecular Solutions for Life Science



PSD2 Rabbit pAb

Catalog No.: A14429

Basic Information

Observed MW

85kDa

Calculated MW

85kDa

Category

Mouse Monoclonal Antibody

Applications

WB,ELISA

Cross-Reactivity

Human,Mouse,Rat

Background

Predicted to enable guanyl-nucleotide exchange factor activity and phospholipid binding activity. Predicted to be involved in regulation of ARF protein signal transduction and regulation of catalytic activity. Predicted to be located in cleavage furrow and ruffle membrane. Predicted to be active in glutamatergic synapse and postsynapse.

Recommended Dilutions

WB 1:500 - 1:2000

Immunogen Information

Gene ID

84249

Swiss Prot

Q9BQI7

Immunogen

Recombinant fusion protein containing a sequence corresponding to amino acids 1-190 of human PSD2 (NP_115665.1).

Synonyms

EFA6C; PSD2

Contact



www.abclonal.com

Product Information

Source

Rabbit

Isotype

IgG

Purification

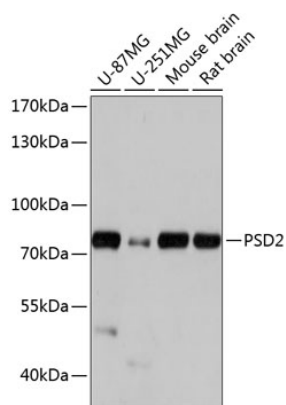
Affinity purification

Storage

Store at -20°C. Avoid freeze / thaw cycles.

Buffer: PBS with 0.01% thimerosal,50% glycerol,pH7.3.

Validation Data



Western blot analysis of various lysates using PSD2 Rabbit pAb (A14429) at 1:1000 dilution.
Secondary antibody: HRP Goat Anti-Rabbit IgG (H+L) (AS014) at 1:10000 dilution.
Lysates/proteins: 25 μ g per lane.
Blocking buffer: 3% nonfat dry milk in TBST.
Detection: ECL Basic Kit (RM00020).
Exposure time: 5s.