

NRSN2 Rabbit pAb

Catalog No.: A14425

Basic Information

Observed MW

33kDa

Calculated MW

22kDa

Category

Primary antibody

Applications

ELISA, WB

Cross-Reactivity

Human, Mouse, Rat

Background

Predicted to be involved in nervous system development. Located in plasma membrane.

Recommended Dilutions

WB 1:500 - 1:2000

Immunogen Information

Gene ID

80023

Swiss Prot

Q9GZP1

Immunogen

Recombinant fusion protein containing a sequence corresponding to amino acids 1-204 of human NRSN2 (NP_079234.1).

Synonyms

C20orf98; dj1103G7.6; NRSN2

Contact

 | www.abclonal.com

Product Information

Source

Rabbit

Isotype

IgG

Purification

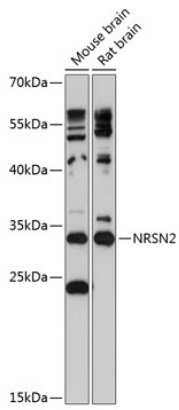
Affinity purification

Storage

Store at -20°C. Avoid freeze / thaw cycles.

Buffer: PBS with 0.01% thimerosal, 50% glycerol, pH7.3.

Validation Data



Western blot analysis of extracts of various cell lines, using NRSN2 antibody (A14425) at 1:3000 dilution.

Secondary antibody: HRP Goat Anti-Rabbit IgG (H+L) (AS014) at 1:10000 dilution.

Lysates/proteins: 25µg per lane.

Blocking buffer: 3% nonfat dry milk in TBST.

Detection: ECL Basic Kit (RM00020).

Exposure time: 60s.