

A14404

Leader in Biomolecular Solutions for Life Science



MRPL2 Rabbit pAb

Catalog No.: A14404

Basic Information

Observed MW

33kDa

Calculated MW

33kDa

Category

Polyclonal Antibody

Applications

WB,ELISA

Cross-Reactivity

Human,Mouse

Background

Mammalian mitochondrial ribosomal proteins are encoded by nuclear genes and help in protein synthesis within the mitochondrion. Mitochondrial ribosomes (mitoribosomes) consist of a small 28S subunit and a large 39S subunit. They have an estimated 75% protein to rRNA composition compared to prokaryotic ribosomes, where this ratio is reversed. Another difference between mammalian mitoribosomes and prokaryotic ribosomes is that the latter contain a 5S rRNA. Among different species, the proteins comprising the mitoribosome differ greatly in sequence, and sometimes in biochemical properties, which prevents easy recognition by sequence homology. This gene encodes a 39S subunit protein that belongs to the Ecol2 ribosomal protein family. A pseudogene corresponding to this gene is found on chromosome 12q. Alternative splicing results in multiple transcript variants encoding distinct isoforms.

Recommended Dilutions

WB 1:500 - 1:2000

Immunogen Information

Gene ID

51069

Swiss Prot

Q5T653

Immunogen

Recombinant fusion protein containing a sequence corresponding to amino acids 1-305 of human MRPL2 (NP_057034.2).

Synonyms

CGI-22; RPML14; MRP-L14; MRPL2

Contact



www.abclonal.com

Product Information

Source

Rabbit

Isotype

IgG

Purification

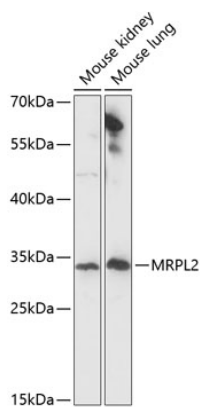
Affinity purification

Storage

Store at -20°C. Avoid freeze / thaw cycles.

Buffer: PBS with 0.01% thimerosal,50% glycerol,pH7.3.

Validation Data



Western blot analysis of various lysates using MRPL2 Rabbit pAb (A14404) at 1:1000 dilution.
Secondary antibody: HRP Goat Anti-Rabbit IgG (H+L) (AS014) at 1:10000 dilution.
Lysates/proteins: 25 μ g per lane.
Blocking buffer: 3% nonfat dry milk in TBST.
Detection: ECL Basic Kit (RM00020).
Exposure time: 90s.