

# NDUFB3 Rabbit pAb

Catalog No.: A14378 **1 Publications**

## Basic Information

### Observed MW

11kDa

### Calculated MW

11kDa

### Category

Primary antibody

### Applications

ELISA, WB, IF/ICC

### Cross-Reactivity

Human, Mouse

## Background

This gene encodes an accessory subunit of the mitochondrial membrane respiratory chain NADH dehydrogenase (Complex I) which is the first enzyme in the electron transport chain of mitochondria. This protein localizes to the inner membrane of the mitochondrion as a single-pass membrane protein. Mutations in this gene contribute to mitochondrial complex 1 deficiency. Alternative splicing results in multiple transcript variants encoding the same protein. Humans have multiple pseudogenes of this gene.

## Recommended Dilutions

<b>WB</b>	1:500 - 1:2000
<b>IF/ICC</b>	1:50 - 1:100

## Immunogen Information

<b>Gene ID</b>	<b>Swiss Prot</b>
4709	043676

### Immunogen

Recombinant fusion protein containing a sequence corresponding to amino acids 1-98 of human NDUFB3 (NP\_002482.1).

### Synonyms

B12; CI-B12; MC1DN25; NDUFB3

## Contact

 | [www.abclonal.com](http://www.abclonal.com)

## Product Information

<b>Source</b>	<b>Isotype</b>	<b>Purification</b>
Rabbit	IgG	Affinity purification

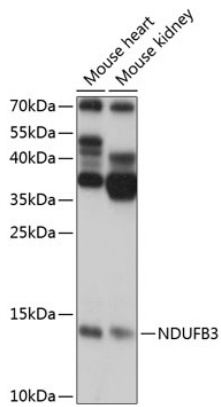
### Storage

Store at -20°C. Avoid freeze / thaw cycles.

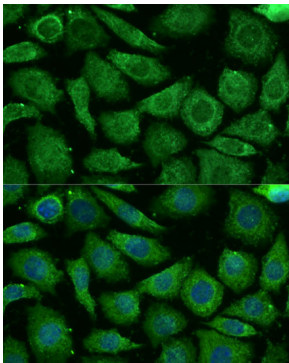
Buffer: PBS with 0.01% thimerosal, 50% glycerol, pH7.3.

## Validation Data

---



Western blot analysis of various lysates using NDUFB3 Rabbit pAb (A14378) at 1:1000 dilution.  
Secondary antibody: HRP Goat Anti-Rabbit IgG (H+L) (AS014) at 1:10000 dilution.  
Lysates/proteins: 25µg per lane.  
Blocking buffer: 3% nonfat dry milk in TBST.  
Detection: ECL Basic Kit (RM00020).  
Exposure time: 10s.



Immunofluorescence analysis of L929 cells using NDUFB3 Rabbit pAb (A14378) at dilution of 1:100 (40x lens). Secondary antibody: Cy3 Goat Anti-Rabbit IgG (H+L) (AS007) at 1:500 dilution. Blue: DAPI for nuclear staining.