

A14365

Leader in Biomolecular Solutions for Life Science



# PSMA8 Rabbit pAb

Catalog No.: A14365

## Basic Information

---

### Observed MW

28kDa

### Calculated MW

29kDa

### Category

Mouse Monoclonal Antibody

### Applications

WB,ELISA

### Cross-Reactivity

Human,Mouse,Rat

## Background

---

Predicted to be involved in meiotic cell cycle and proteasomal protein catabolic process. Located in extracellular exosome and nucleus.

## Recommended Dilutions

---

WB 1:500 - 1:2000

## Immunogen Information

---

### Gene ID

143471

### Swiss Prot

Q8TAA3

### Immunogen

Recombinant fusion protein containing a sequence corresponding to amino acids 1-240 of human PSMA8 (NP\_653263.2).

### Synonyms

PSMA7L; PSMA8

## Contact

---



[www.abclonal.com](http://www.abclonal.com)

## Product Information

---

### Source

Rabbit

### Isotype

IgG

### Purification

Affinity purification

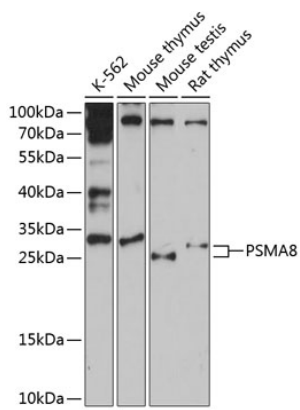
### Storage

Store at -20°C. Avoid freeze / thaw cycles.

Buffer: PBS with 0.01% thimerosal,50% glycerol,pH7.3.

## Validation Data

---



Western blot analysis of various lysates using PSMA8 Rabbit pAb (A14365) at 1:3000 dilution.  
Secondary antibody: HRP Goat Anti-Rabbit IgG (H+L) (AS014) at 1:10000 dilution.  
Lysates/proteins: 25 $\mu$ g per lane.  
Blocking buffer: 3% nonfat dry milk in TBST.  
Detection: ECL Basic Kit (RM00020).  
Exposure time: 90s.